



Lafrentz Road Marking

Traffic Accommodation Plan

Updated May 2020

Lafrentz Road Marking

Traffic Accommodation Plan

Drawing: D-1

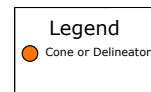
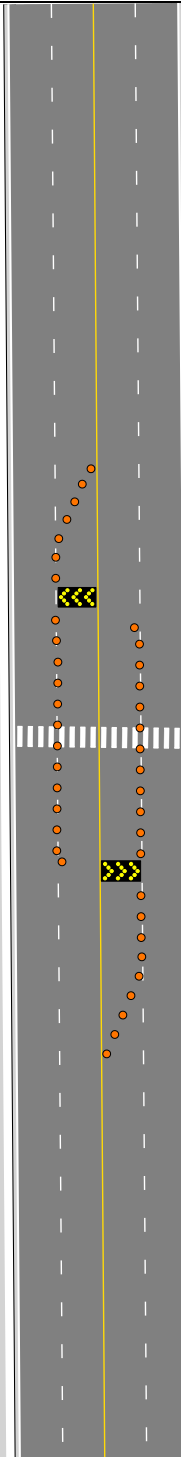
General Use:
Mid-block crosswalk installation

GENERAL NOTES

Taper, buffer, and sign distance will vary depending on traffic speed and volume.

Refer to the TAPER GUIDELINES document for taper distances.

Minimum sign spacing: 50m
Maximum sign spacing: 150m



Lafrentz Road Marking

Traffic Accommodation Plan

Drawing: **D-2**

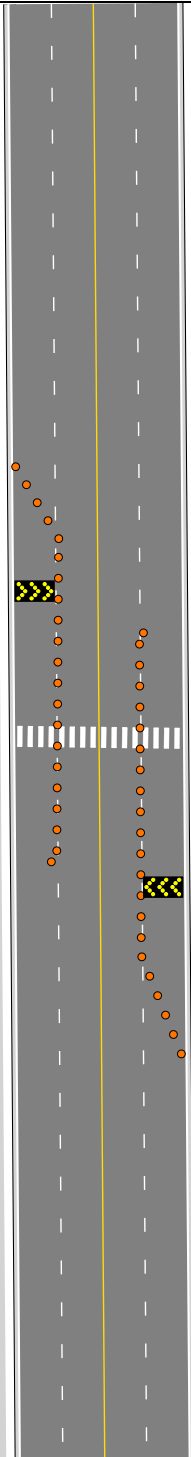
General Use:
Mid-block crosswalk installation

GENERAL NOTES

Taper, buffer, and sign spacing will vary depending on traffic speed and volume.

Refer to the TAPER GUIDELINES document for taper distances.

Minimum sign spacing: 50m
Maximum sign spacing: 150m



Legend

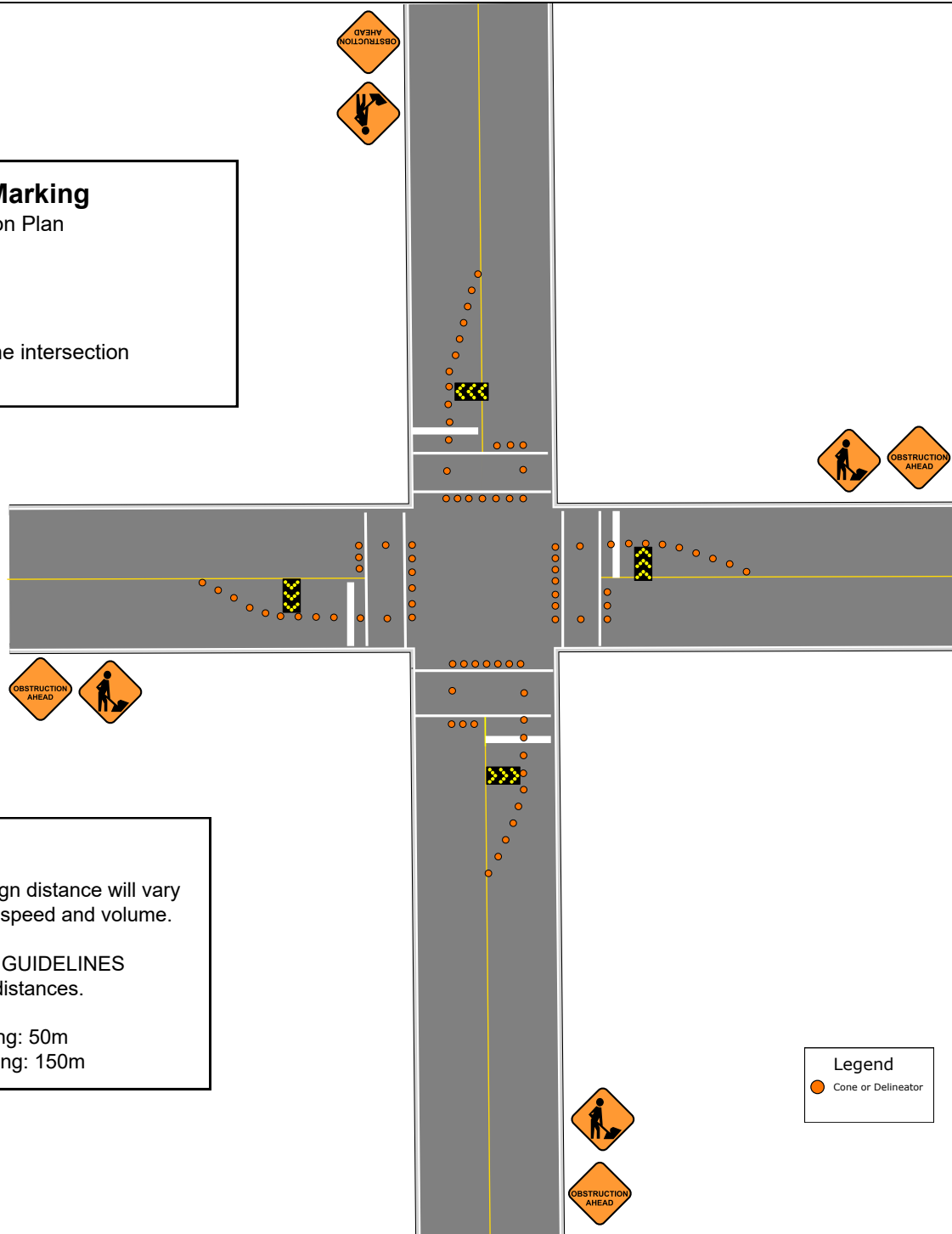
- Cone or Delineator

Lafrentz Road Marking

Traffic Accommodation Plan

Drawing: D-'

General Use:
Low traffic / single lane intersection
line installation



GENERAL NOTES

Taper, buffer, and sign distance will vary depending on traffic speed and volume.

Refer to the TAPER GUIDELINES document for taper distances.

Minimum sign spacing: 50m
Maximum sign spacing: 150m

Legend

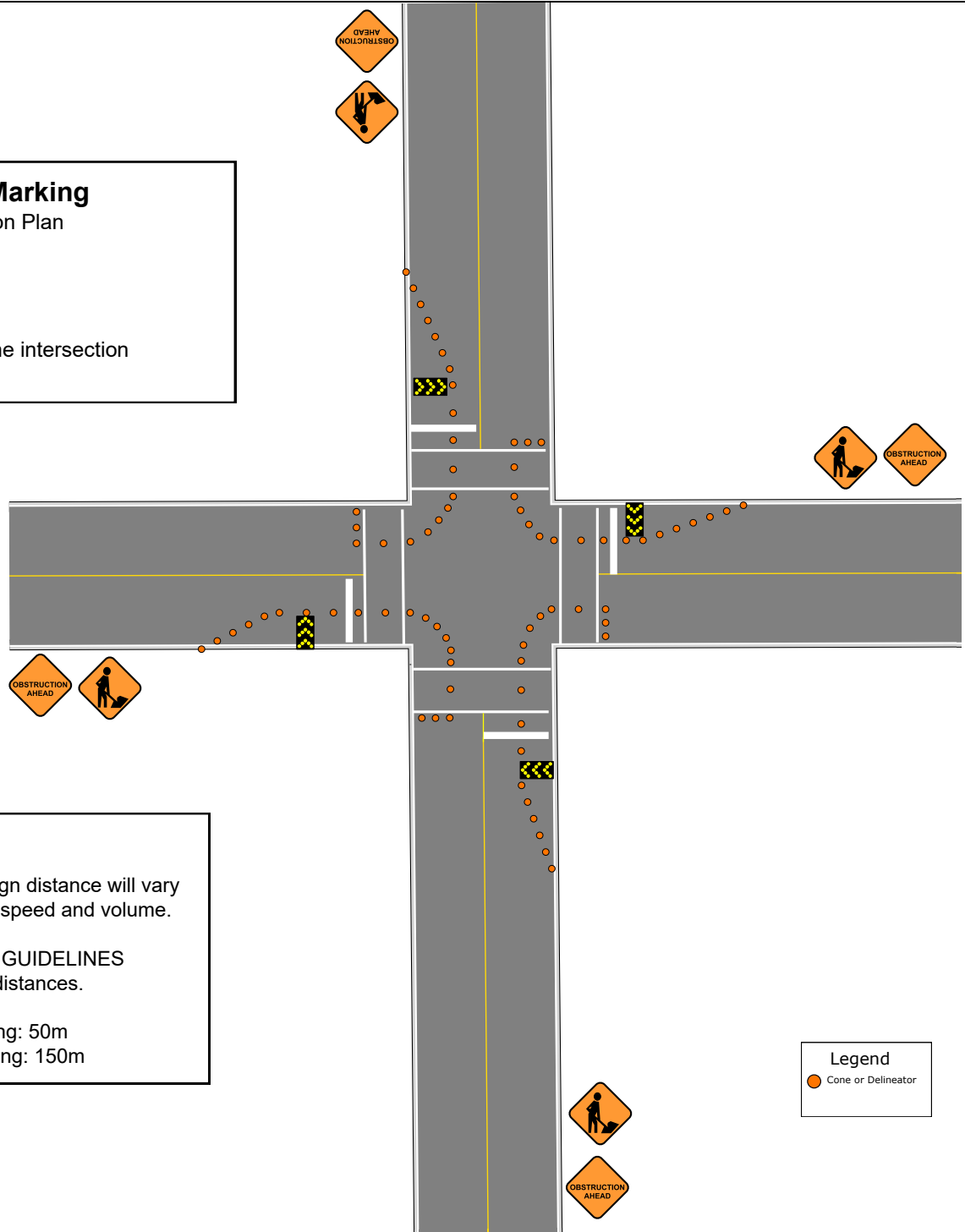
● Cone or Delineator

Lafrentz Road Marking

Traffic Accommodation Plan

Drawing: D-4

General Use:
Low traffic / single lane intersection
line installation



GENERAL NOTES

Taper, buffer, and sign distance will vary depending on traffic speed and volume.

Refer to the TAPER GUIDELINES document for taper distances.

Minimum sign spacing: 50m
Maximum sign spacing: 150m

Legend

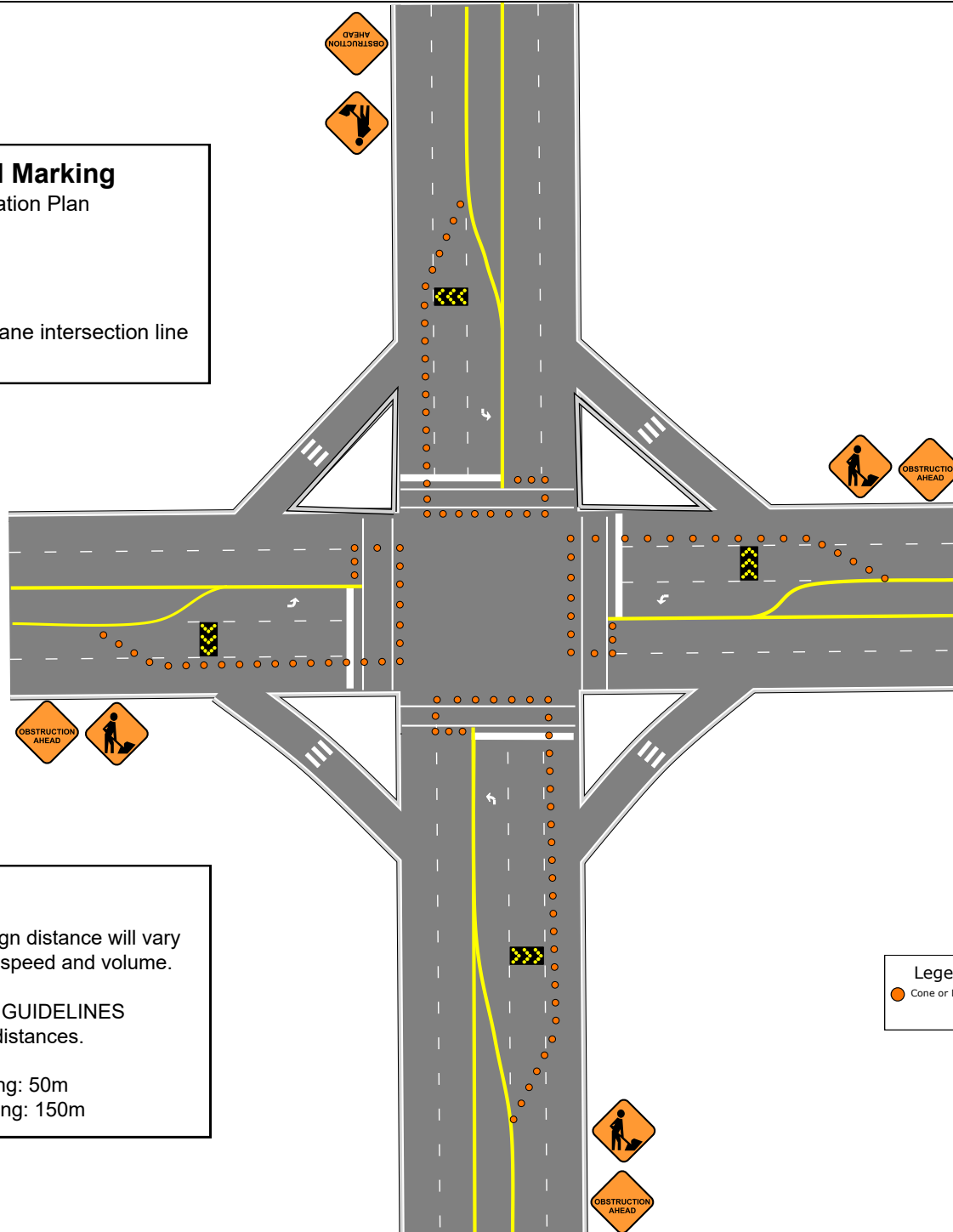
● Cone or Delineator

Lafrentz Road Marking

Traffic Accommodation Plan

Drawing: D-5

General Use:
High traffic / multi lane intersection line
installation



GENERAL NOTES

Taper, buffer, and sign distance will vary depending on traffic speed and volume.

Refer to the TAPER GUIDELINES document for taper distances.

Minimum sign spacing: 50m
Maximum sign spacing: 150m

Legend

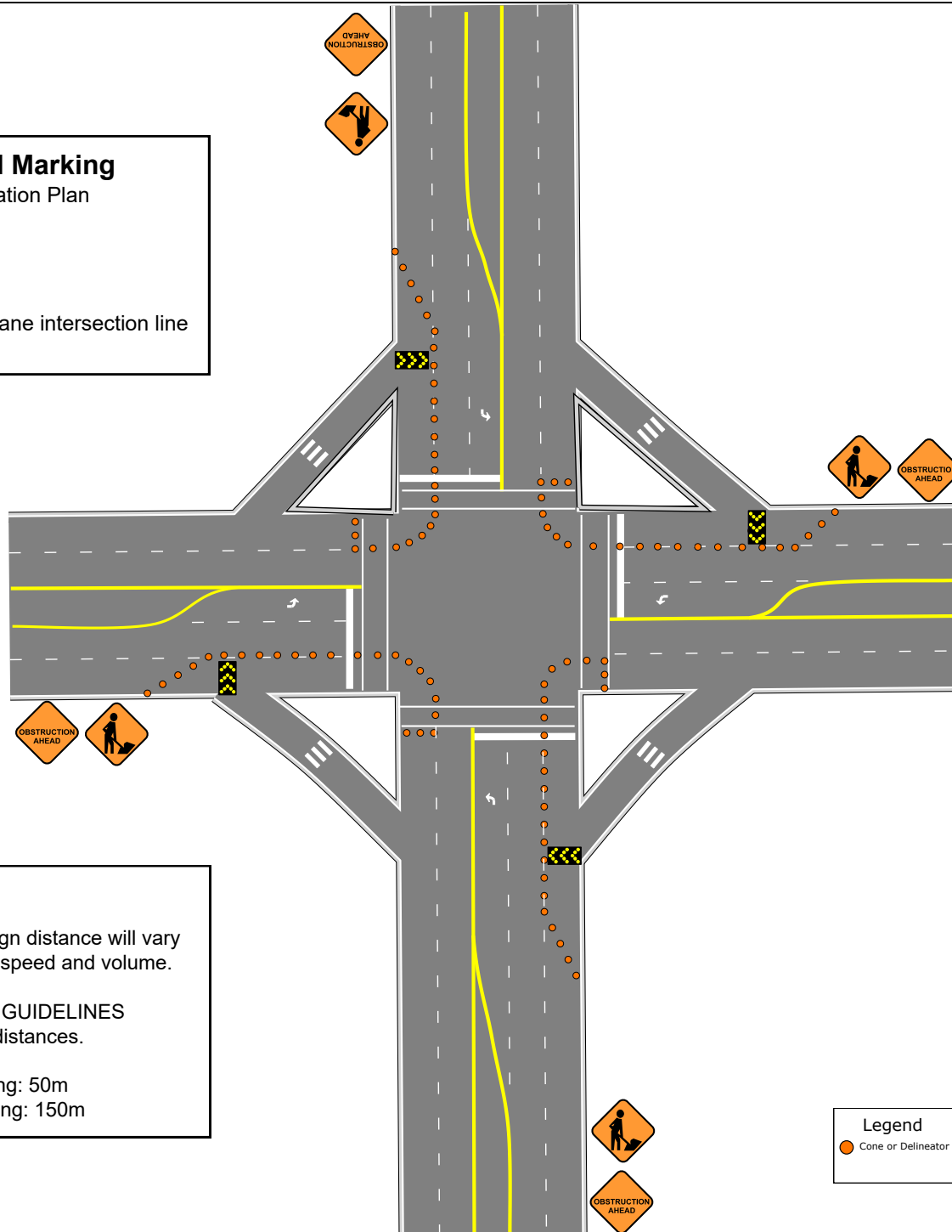
● Cone or Delineator

Lafrentz Road Marking

Traffic Accommodation Plan

Drawing: D-6

General Use:
High traffic / multi lane intersection line
installation



GENERAL NOTES

Taper, buffer, and sign distance will vary depending on traffic speed and volume.

Refer to the TAPER GUIDELINES document for taper distances.

Minimum sign spacing: 50m
Maximum sign spacing: 150m

Legend

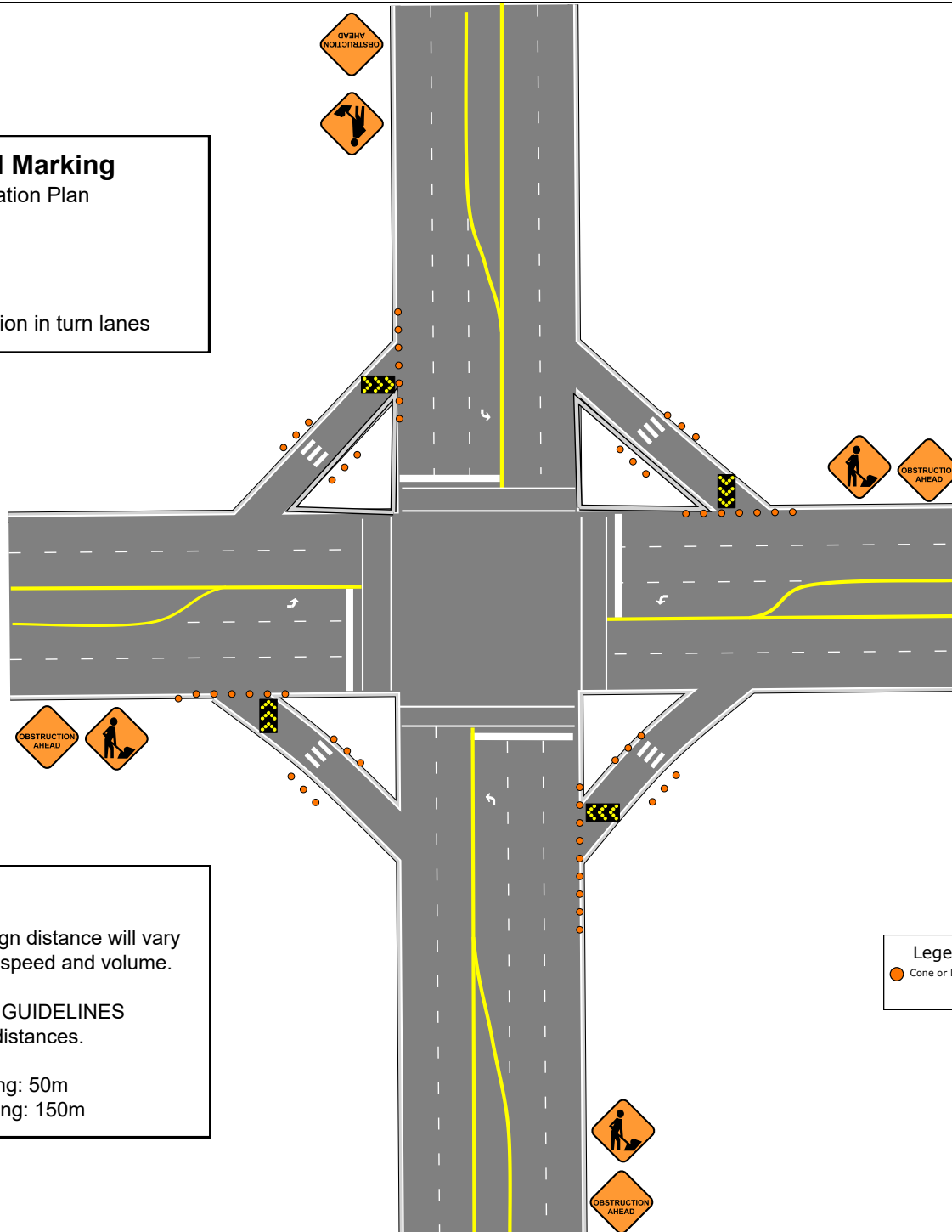
● Cone or Delineator

Lafrentz Road Marking

Traffic Accommodation Plan

Drawing: D-7

General Use:
Crosswalk installation in turn lanes



GENERAL NOTES

Taper, buffer, and sign distance will vary depending on traffic speed and volume.

Refer to the TAPER GUIDELINES document for taper distances.

Minimum sign spacing: 50m
Maximum sign spacing: 150m

Legend

● Cone or Delineator

Lafrentz Road Marking

Traffic Accommodation Plan

Drawing: D-8

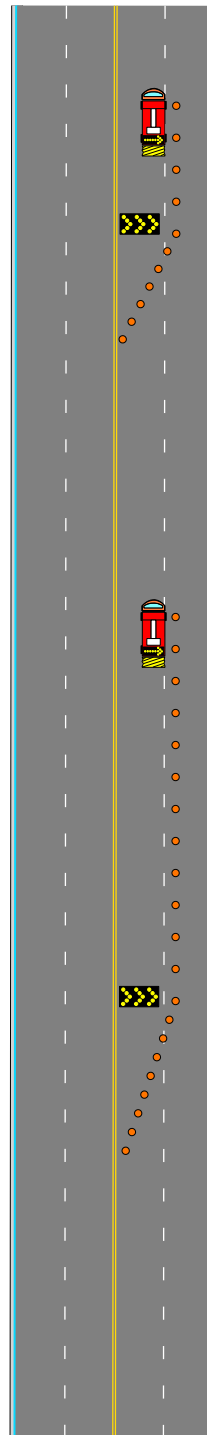
General Use:
Lane line or yellow centerline installation

GENERAL NOTES

Taper, buffer, and sign distance will vary depending on traffic speed and volume.

Refer to the TAPER GUIDELINES document for taper distances.

Minimum sign spacing: 50m
Maximum sign spacing: 150m



GRINDER

APPLICATOR

Legend

● Cone or Delineator



Lafrentz Road Marking

Traffic Accommodation Plan

Drawing: D-9

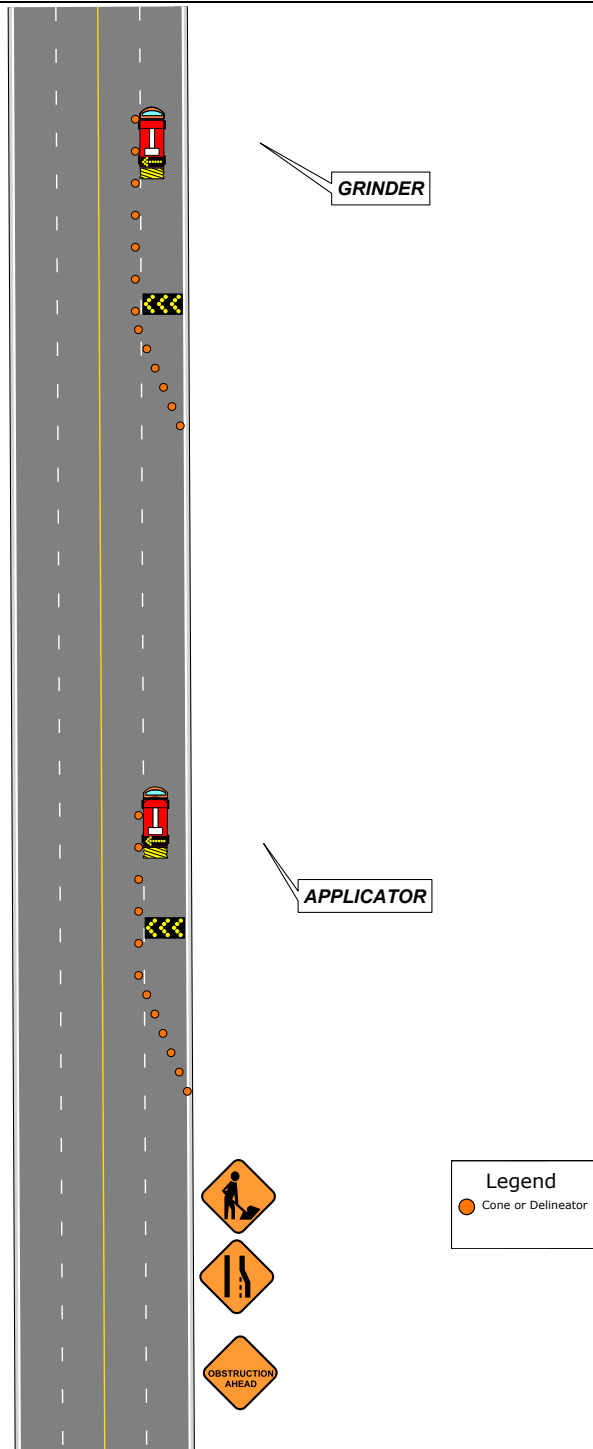
General Use:
Lane line, bike lane, parking line installation

GENERAL NOTES

Taper, buffer, and sign distance will vary depending on traffic speed and volume.

Refer to the TAPER GUIDELINES document for taper distances.

Minimum sign spacing: 50m
Maximum sign spacing: 150m



Lafrentz Road Marking

Traffic Accommodation Plan

Drawing: D-10

General Use:

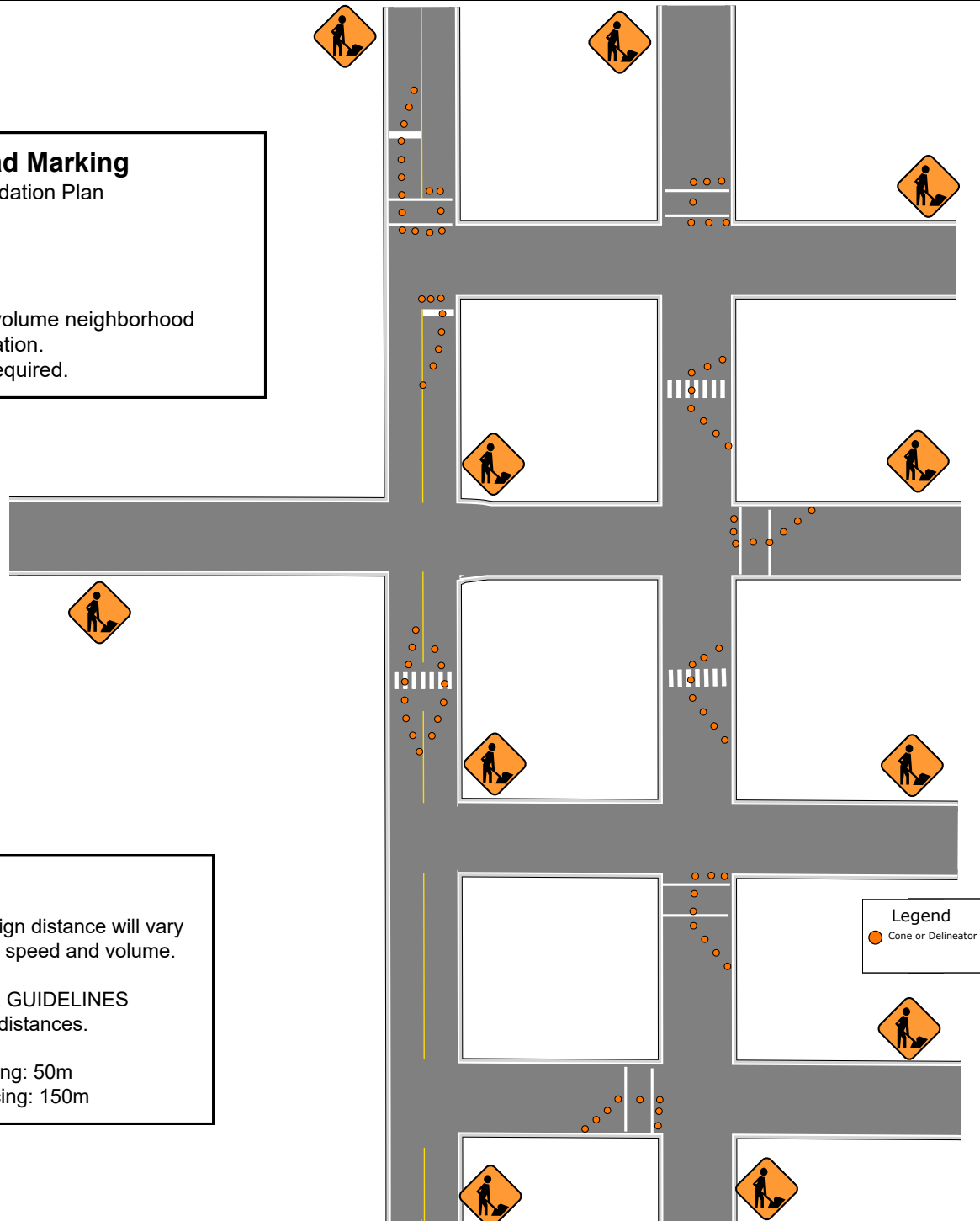
Low speed, low volume neighborhood
crosswalk installation.
Flag person as required.

GENERAL NOTES

Taper, buffer, and sign distance will vary depending on traffic speed and volume.

Refer to the TAPER GUIDELINES document for taper distances.

Minimum sign spacing: 50m
Maximum sign spacing: 150m



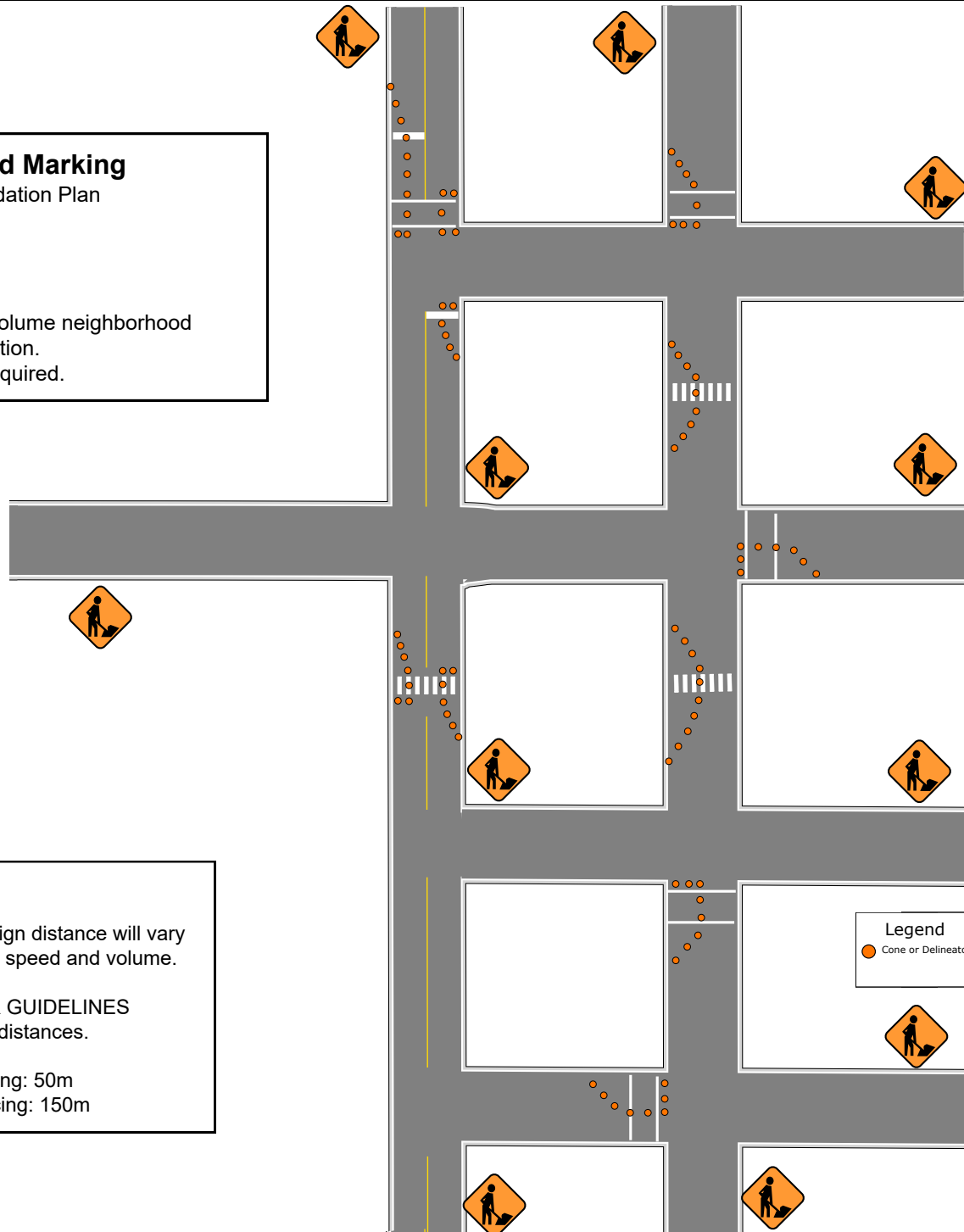
Lafrentz Road Marking

Traffic Accommodation Plan

Drawing: D-11

General Use:

Low speed, low volume neighborhood
crosswalk installation.
Flag person as required.



GENERAL NOTES

Taper, buffer, and sign distance will vary depending on traffic speed and volume.

Refer to the TAPER GUIDELINES document for taper distances.

Minimum sign spacing: 50m
Maximum sign spacing: 150m

Legend

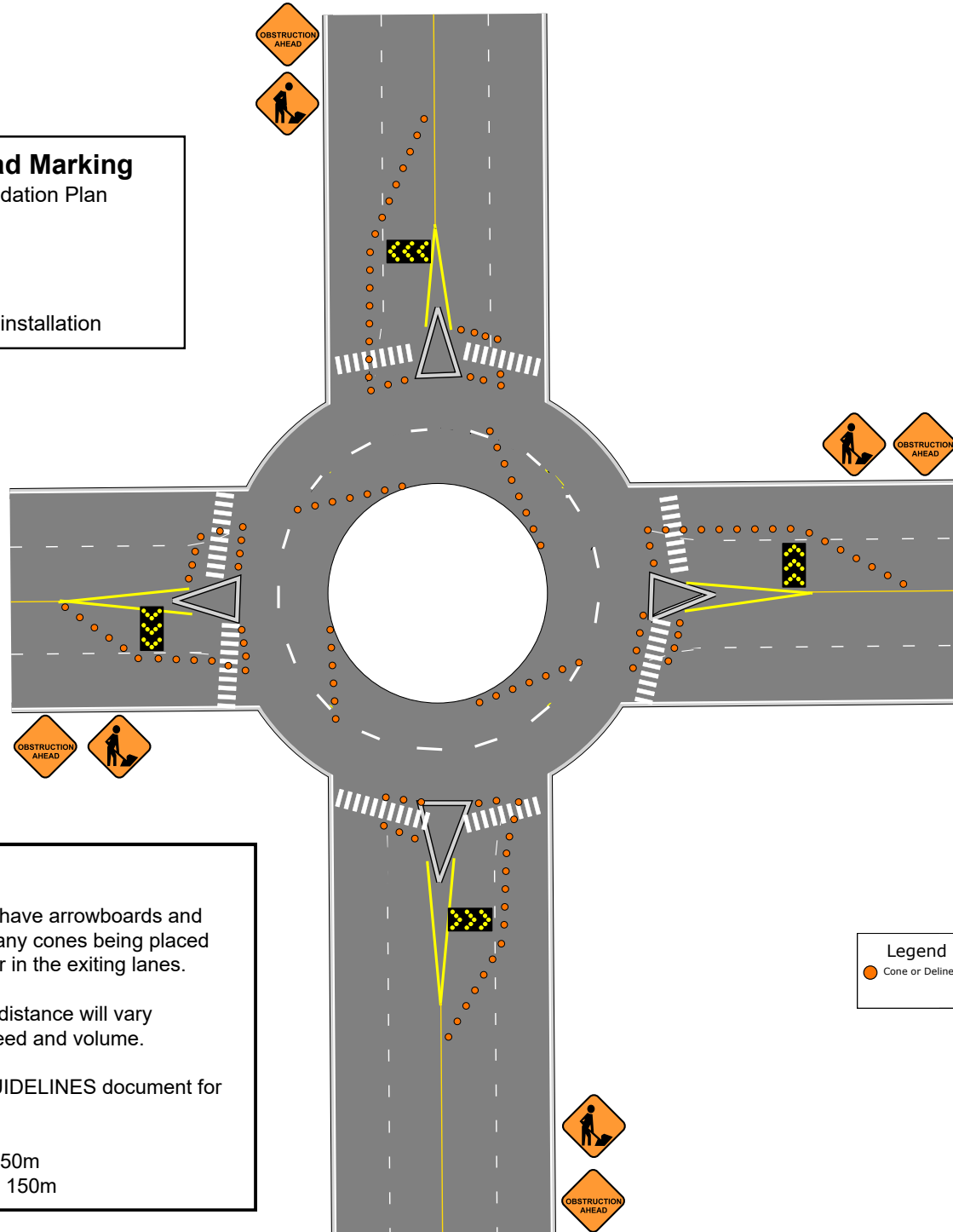
● Cone or Delineator

Lafrentz Road Marking

Traffic Accommodation Plan

Drawing: D-12

General Use:
Traffic circle line installation



GENERAL NOTES

All entering lanes must have arrowboards and tapers in place prior to any cones being placed within the traffic circle or in the exiting lanes.

Taper, buffer, and sign distance will vary depending on traffic speed and volume.

Refer to the TAPER GUIDELINES document for taper distances.

Minimum sign spacing: 50m
Maximum sign spacing: 150m

Legend

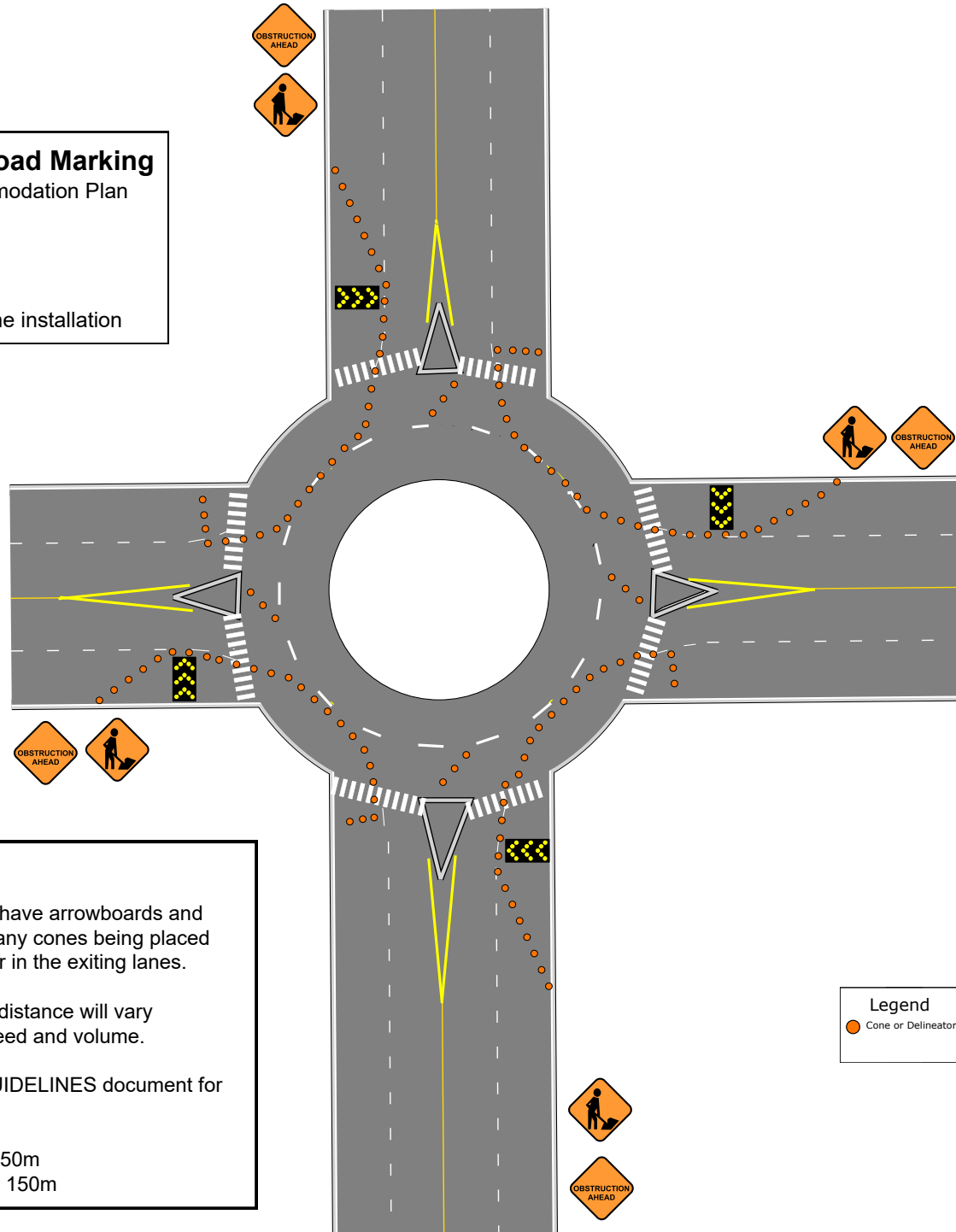
● Cone or Delineator

Lafrentz Road Marking

Traffic Accommodation Plan

Drawing: D-13

General Use:
Traffic circle line installation



GENERAL NOTES

All entering lanes must have arrowboards and tapers in place prior to any cones being placed within the traffic circle or in the exiting lanes.

Taper, buffer, and sign distance will vary depending on traffic speed and volume.

Refer to the TAPER GUIDELINES document for taper distances.

Minimum sign spacing: 50m
Maximum sign spacing: 150m

Legend

● Cone or Delineator

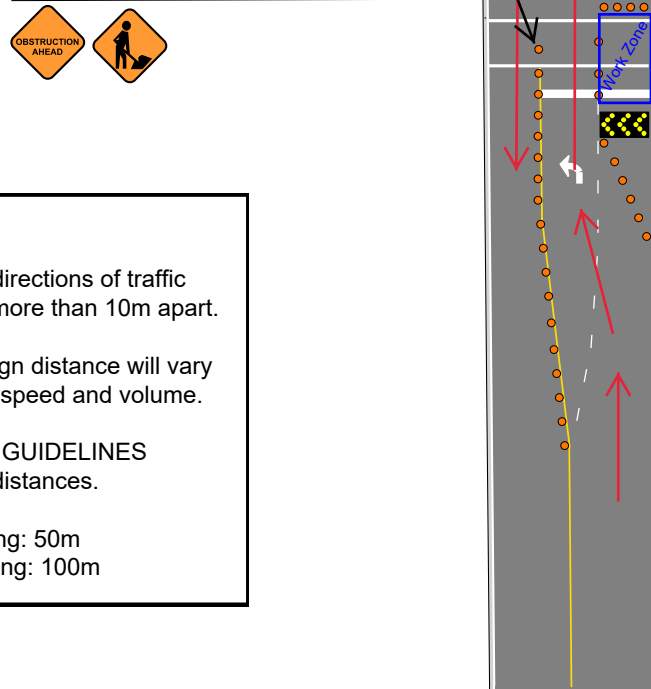
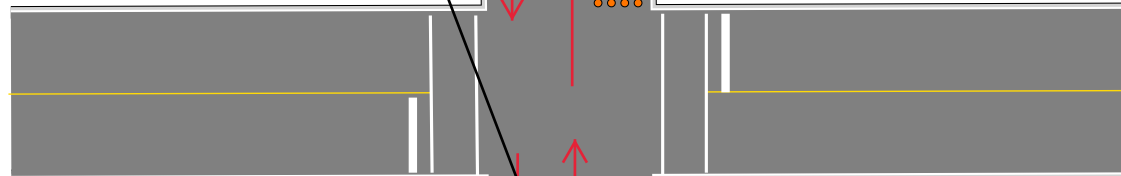
Lafrentz Road Marking

Traffic Accommodation Plan

Drawing: D-14

General Use:
3 lane road intersection line installation

Use a "Keep Right" sign
or a Right arrow facing
the intersection



GENERAL NOTES

Cones dividing two directions of traffic shall be spaced no more than 10m apart.

Taper, buffer, and sign distance will vary depending on traffic speed and volume.

Refer to the TAPER GUIDELINES document for taper distances.

Minimum sign spacing: 50m
Maximum sign spacing: 100m

Legend

- Cone or Delineator
- Direction of Vehicle Travel
- Work Zone

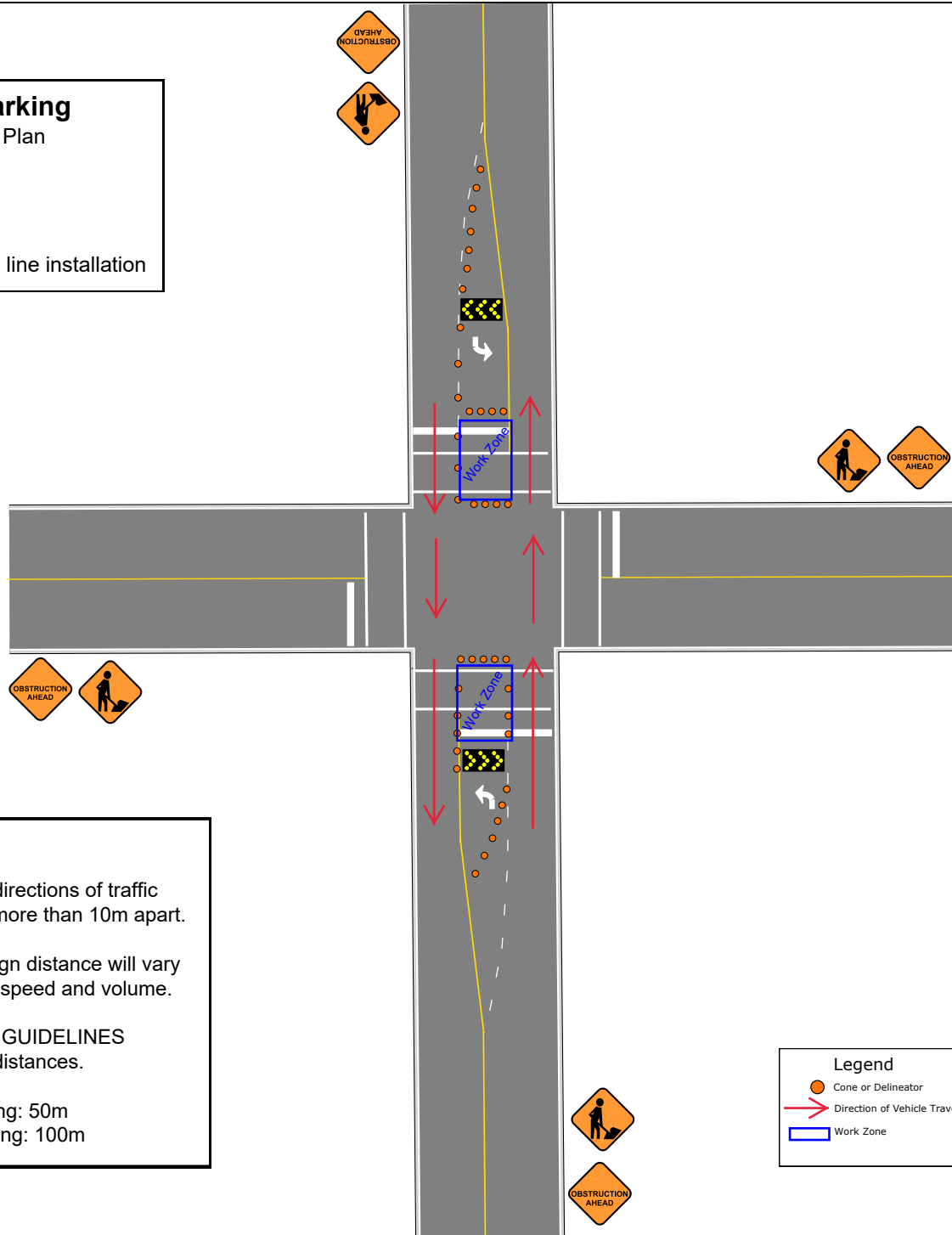


Lafrentz Road Marking

Traffic Accommodation Plan

Drawing: **D-1)**

General Use:
3 lane road intersection line installation



GENERAL NOTES

Cones dividing two directions of traffic shall be spaced no more than 10m apart.

Taper, buffer, and sign distance will vary depending on traffic speed and volume.

Refer to the TAPER GUIDELINES document for taper distances.

Minimum sign spacing: 50m
Maximum sign spacing: 100m

Legend

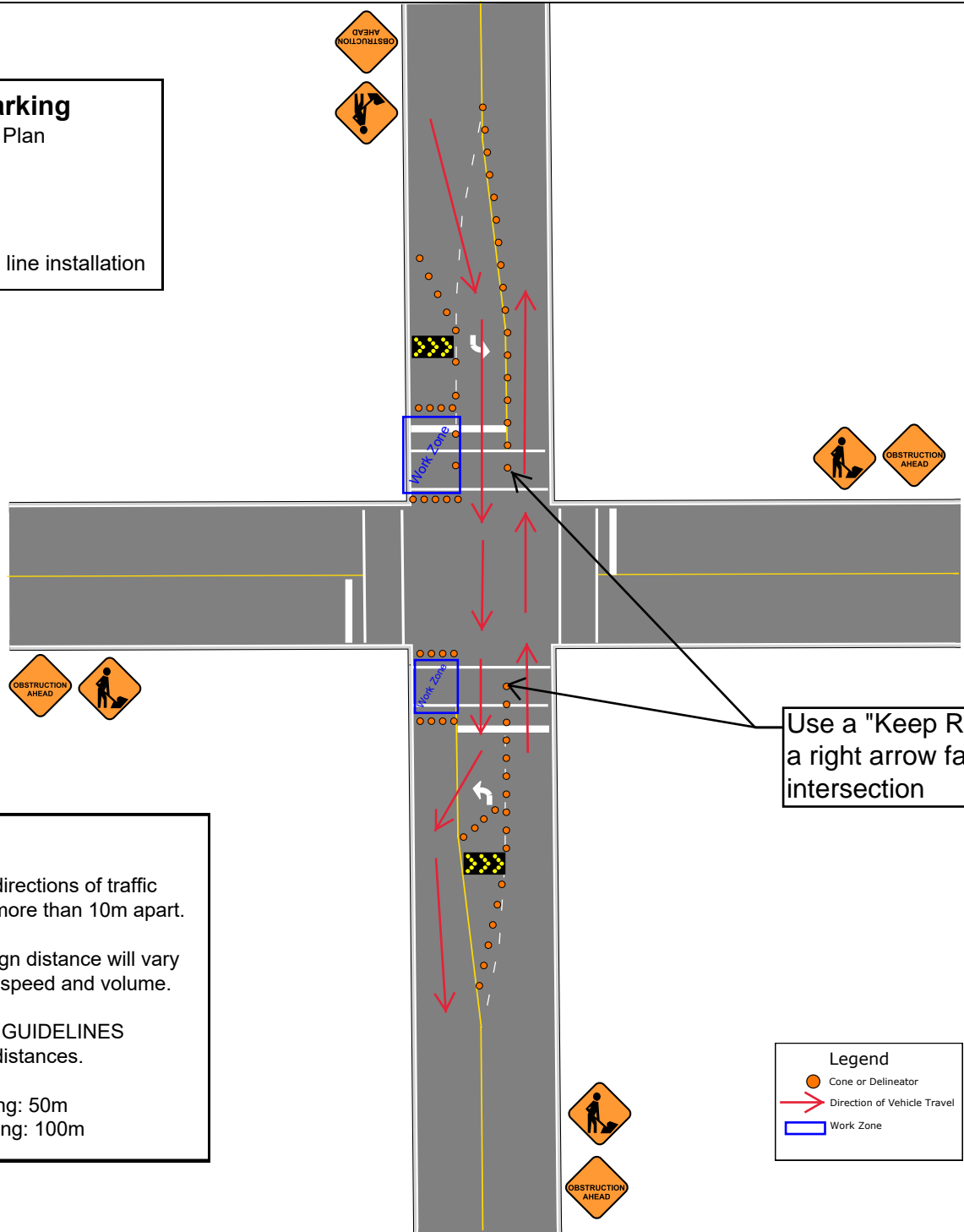
- Cone or Delineator
- Direction of Vehicle Travel
- ▭ Work Zone

Lafrentz Road Marking

Traffic Accommodation Plan

Drawing: D-1*

General Use:
3 lane road intersection line installation



GENERAL NOTES

Cones dividing two directions of traffic shall be spaced no more than 10m apart.

Taper, buffer, and sign distance will vary depending on traffic speed and volume.

Refer to the TAPER GUIDELINES document for taper distances.

Minimum sign spacing: 50m
Maximum sign spacing: 100m

Use a "Keep Right" sign or a right arrow facing the intersection

Legend

- Cone or Delineator
- Direction of Vehicle Travel
- Work Zone

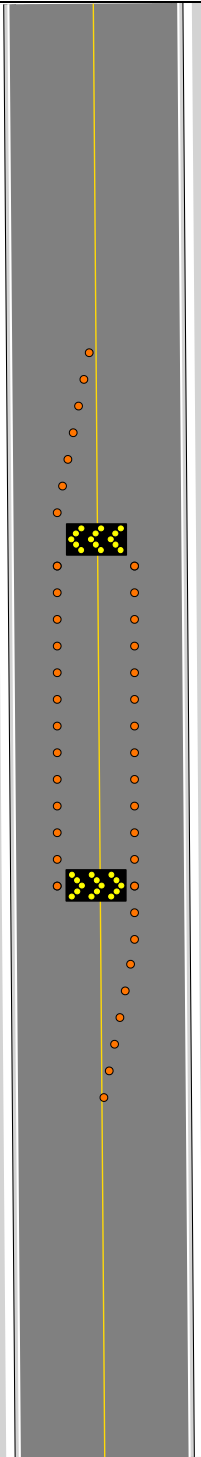
Lafrentz Road Marking

Traffic Accommodation Plan

Drawing: D-17

General Use:

2 lane road, yellow centerline installation



Legend

● Cone or Delineator

GENERAL NOTES

Taper, buffer, and sign distance will vary depending on traffic speed and volume.

Refer to the TAPER GUIDELINES document for taper distances.

Minimum sign spacing: 50m
Maximum sign spacing: 150m



Lafrentz Road Marking

Traffic Accommodation Plan

Drawing: **D-18**

General Use:

3 lane road, lane line or intersection line installation

Distance A

50m	@	50 km/h
75m	@	60 km/h
125m	@	70 km/h
200m	@	80 km/h
350m	@	100 km/h
450m	@	110 km/h

Distance A


GENERAL NOTES

Taper, buffer, and sign distance will vary depending on traffic speed and volume.

Refer to the TAPER GUIDELINES document for taper distances.

Minimum sign spacing: 50m
Maximum sign spacing: 100m

Legend

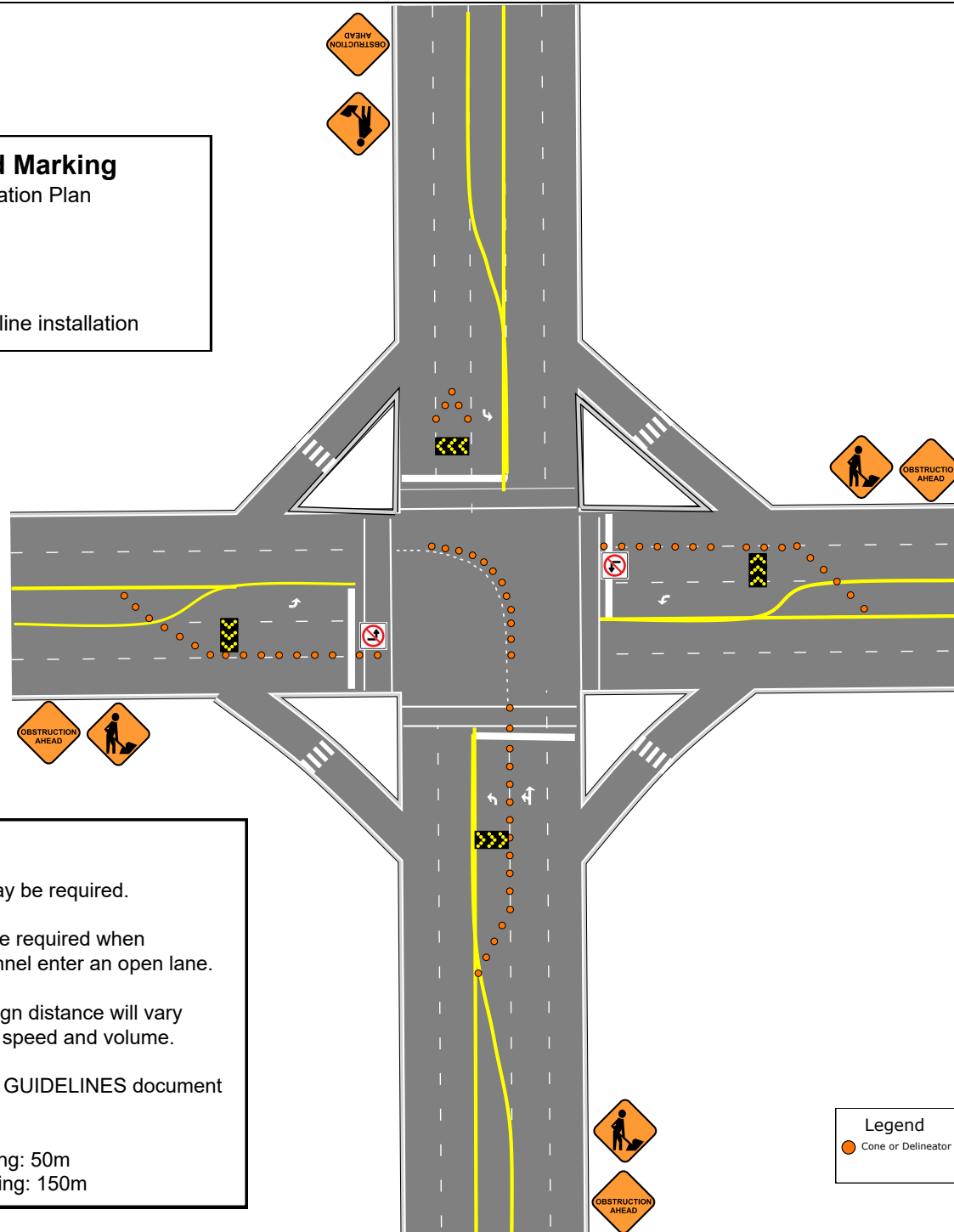
 Cone or Delineator

Lafrentz Road Marking

Traffic Accommodation Plan

Drawing: **D-19**

General Use:
Intersection guide line installation



GENERAL NOTES

No left turn signs may be required.

A flag person may be required when equipment or personnel enter an open lane.

Taper, buffer, and sign distance will vary depending on traffic speed and volume.

Refer to the TAPER GUIDELINES document for taper distances.

Minimum sign spacing: 50m
Maximum sign spacing: 150m

Legend

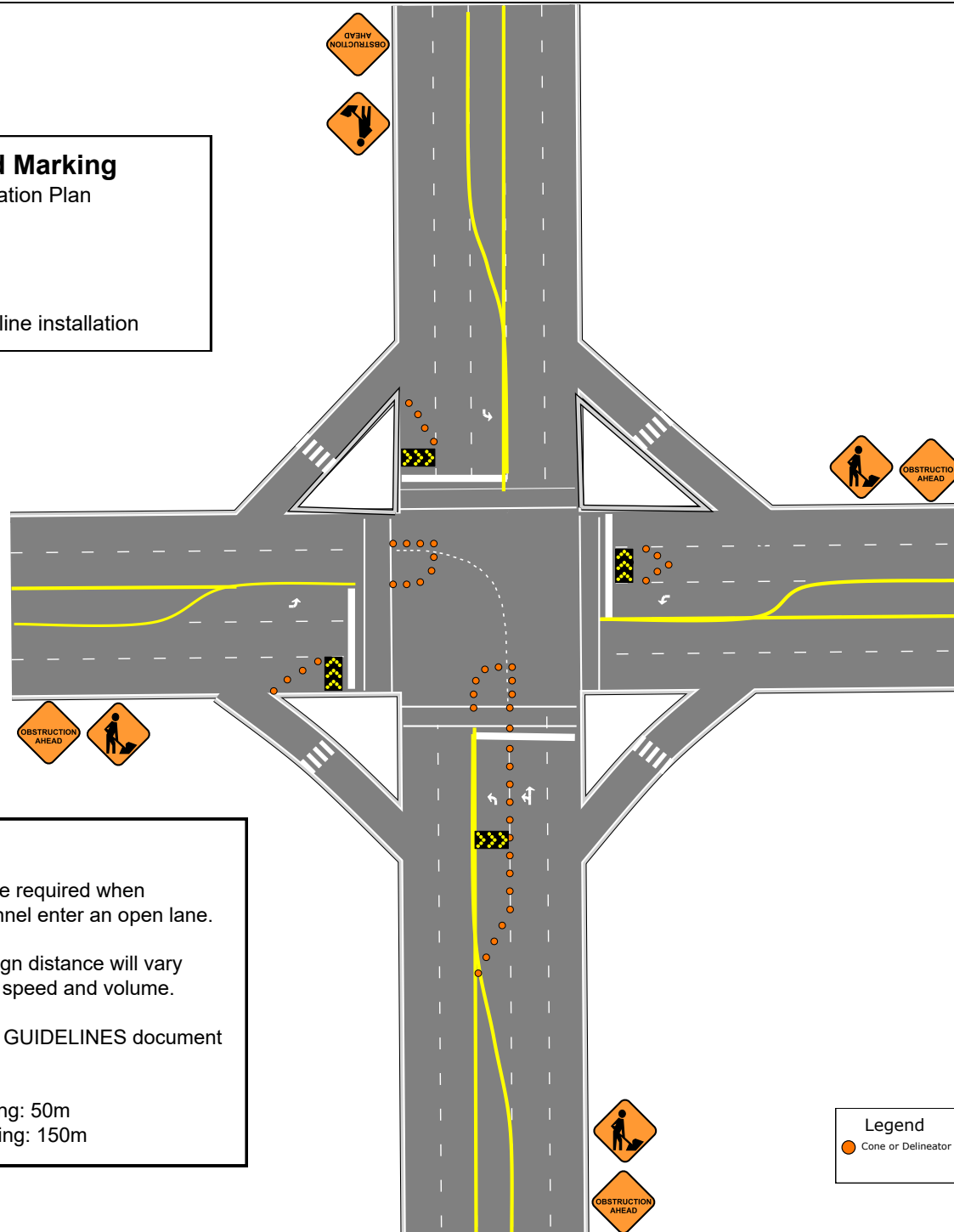
● Cone or Delineator

Lafrentz Road Marking

Traffic Accommodation Plan

Drawing: **D-20**

General Use:
Intersection guide line installation



GENERAL NOTES

A flag person may be required when equipment or personnel enter an open lane.

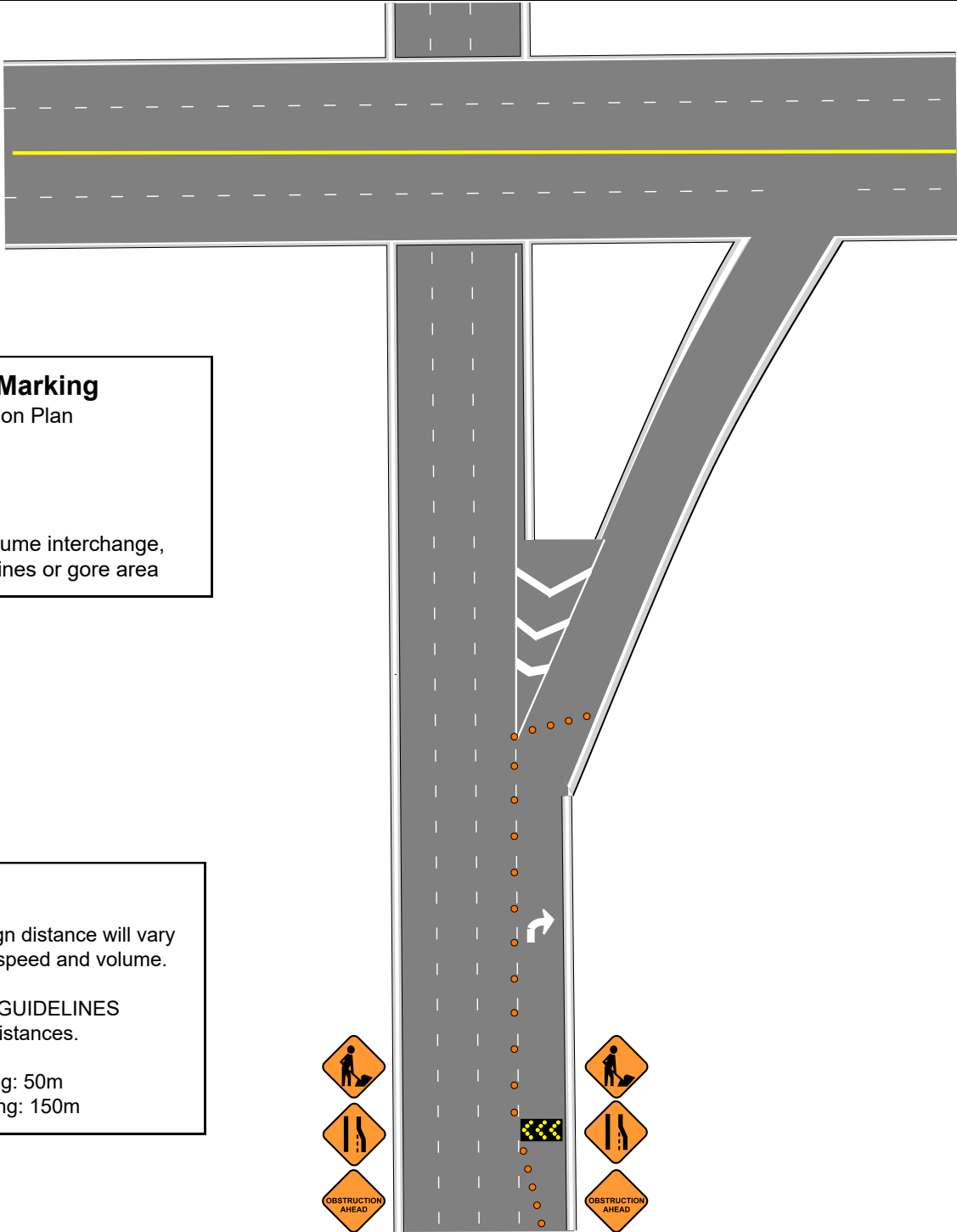
Taper, buffer, and sign distance will vary depending on traffic speed and volume.

Refer to the TAPER GUIDELINES document for taper distances.

Minimum sign spacing: 50m
Maximum sign spacing: 150m

Legend

● Cone or Delineator



Lafrentz Road Marking

Traffic Accommodation Plan

Drawing: **D-21**

General Use:

High speed, high volume interchange,
entrance / exit lane lines or gore area

GENERAL NOTES

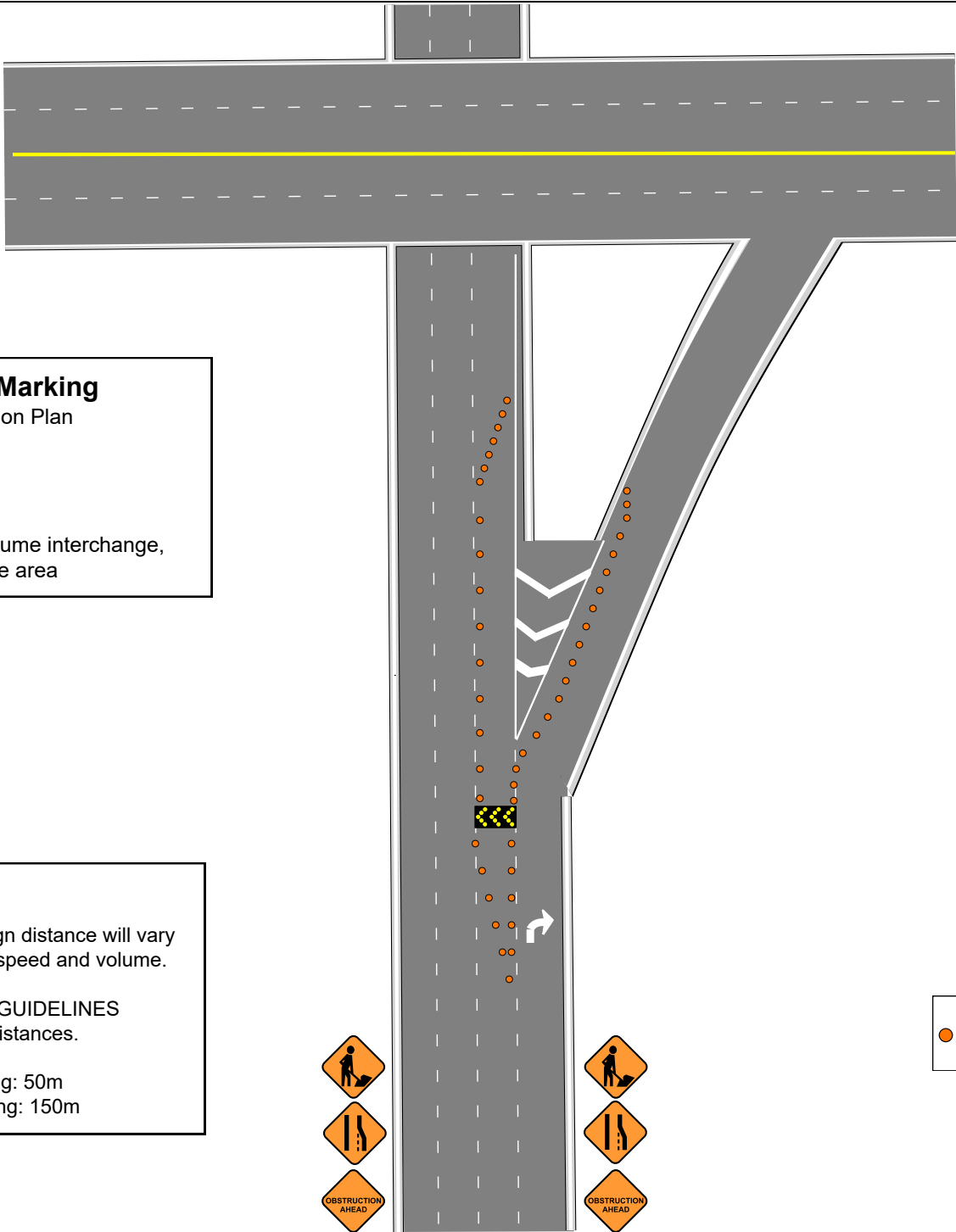
Taper, buffer, and sign distance will vary depending on traffic speed and volume.

Refer to the TAPER GUIDELINES document for taper distances.

Minimum sign spacing: 50m
Maximum sign spacing: 150m

Legend

● Cone or Delineator



Lafrentz Road Marking

Traffic Accommodation Plan

Drawing: **D-22**

General Use:

High speed, high volume interchange,
exit lane lines or gore area

GENERAL NOTES

Taper, buffer, and sign distance will vary depending on traffic speed and volume.

Refer to the TAPER GUIDELINES document for taper distances.

Minimum sign spacing: 50m
Maximum sign spacing: 150m

Legend

● Cone or Delineator



Lafrentz Road Marking

Traffic Accommodation Plan

Drawing: **D-24**

General Use:

High speed, high volume interchange
entrance lane lines

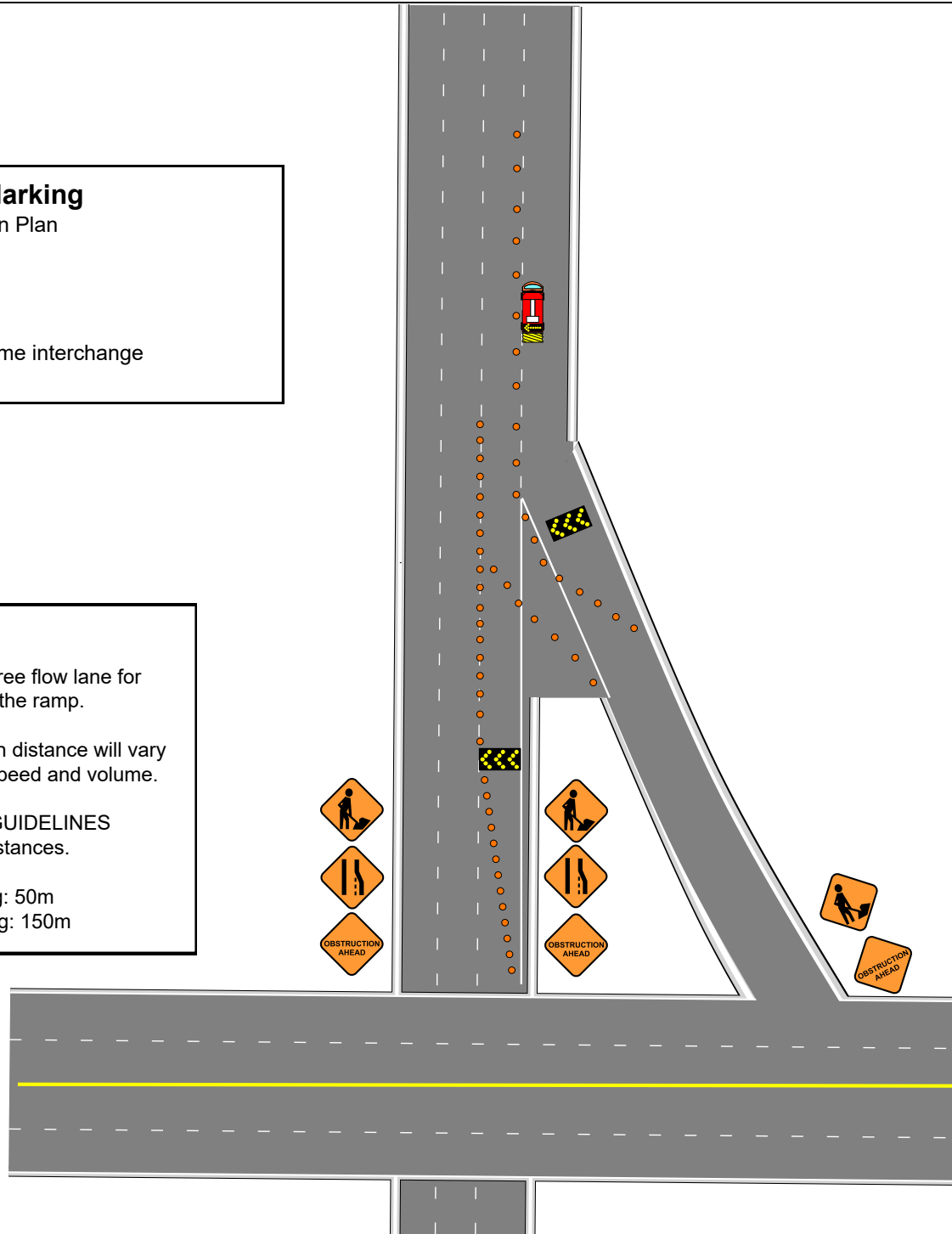
GENERAL NOTES

This setup creates a free flow lane for
the traffic entering on the ramp.

Taper, buffer, and sign distance will vary
depending on traffic speed and volume.

Refer to the TAPER GUIDELINES
document for taper distances.

Minimum sign spacing: 50m
Maximum sign spacing: 150m



Legend

● Cone or Delineator

Lafrentz Road Marking

Traffic Accommodation Plan

Drawing: **D-25**

General Use:

Narrow 2 lane road, install yellow centerline or white shoulder line

GENERAL NOTES

Arrow boards shall display CAUTION - DIAMOND so as to not inadvertently direct traffic prematurely.

Center line delineation can prevent premature lane changes.

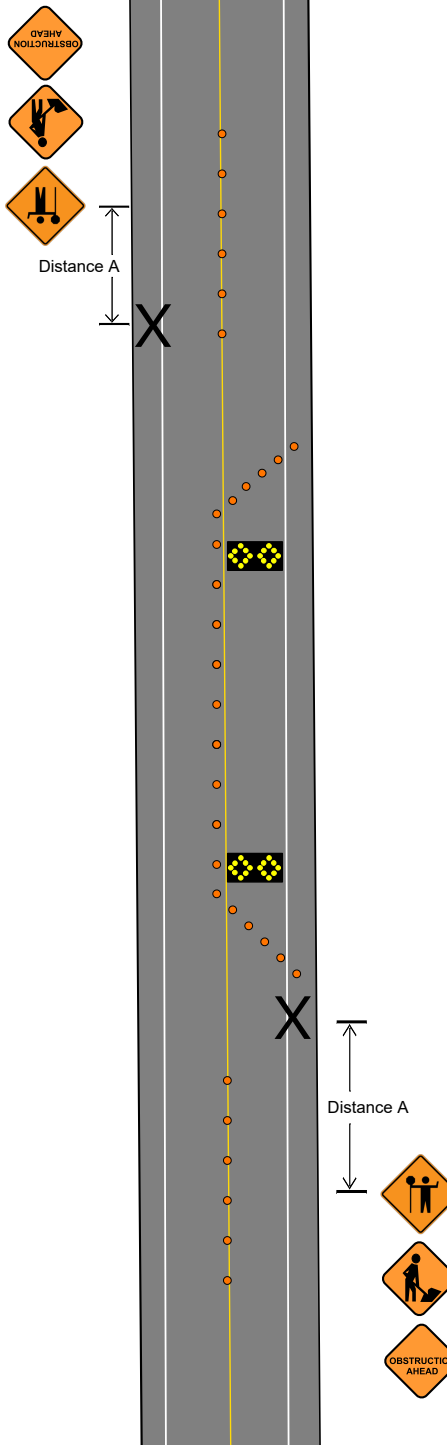
Traffic control persons must ensure adequate communication can be maintained, the use of radios is recommended.

Distance A: Shall be no more than 500m, and may require the signage to be moved throughout the day

Taper, buffer, and sign distance will vary depending on traffic speed and volume.

Refer to the TAPER GUIDELINES document for taper distances.

Minimum sign spacing: 50m
Maximum sign spacing: 100m



Legend

- Cone or Delineator
- X Traffic Control Person

Lafrentz Road Marking

Traffic Accommodation Plan

Drawing: **TAPER GUIDELINES**

General Use:

All tapers, dependant on road speed limit

URBAN TAPER

To be used where speeds are less than 70 km/h.

This taper shall consist of a minimum of 5 cones, and be constructed in a straight line.

This taper will typically consist of 18" cones.

Distance A: If any working activities will happen behind this arrow board, such as dumping a sweeper or filling thermoplastic, this distance must be a minimum of 40m with additional cones every 10m. Otherwise a distance of 10m is sufficient.

Distance B: Shall be 5m to 10m and will take into consideration the road speed limit and the surrounding roadways and driveways.

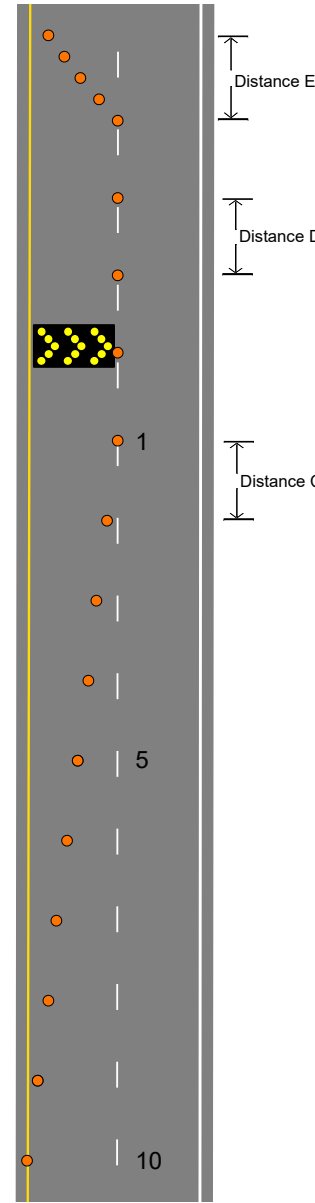
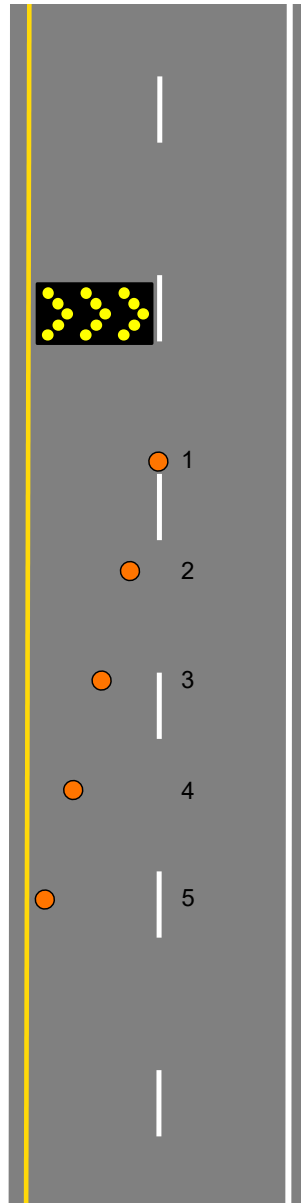
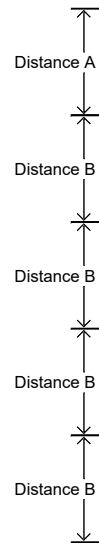
Cone 1: Center of the lane line

Cone 2: Center of the right wheel path

Cone 3: Center of the lane

Cone 4: Center of the left wheel path

Cone 5: Inset from the gutter or shoulder line, as pictured.



Legend

● Cone or Delineator

HIGHWAY TAPER

To be used where speeds are greater than or equal too 70 km/h.

This taper shall consist of a minimum of 10 evenly spaced cones, and be constructed in a straight line. (40:1 taper)

All working activities shall take place beyond the arrow board, never in the transition zone.

This taper will typically consist of 28" cones, delineator's, or drums/barrels.

Distance C: Shall be 15m in length

Distance D: 50m maximum

Distance E: 20m in length (5:1 taper), 5 cones minimum

Cone 1: Center of the line

Cone 5: Center of the lane

Cone 10: Center of the line

Additional cones may be required to close the shoulder, and will continue at the same spacing and distance

* This guideline is based on Alberta Transportations Traffic Accommodation in Work Zones 2018 manual.

Lafrentz Road Marking

Traffic Accommodation Plan

Drawing: WORK ZONE SETUP AND REMOVAL GUIDELINES

General Use:
All work zones

Determine Layout

Measurements can be made using a DMI, GPS, odometer, or manual measuring.

Marking can be done at the edge of the pavement with survey stakes, paint, or cones.

The same steps can be used on multi-lane roads and divided highways.

Order of Installation

Cover any existing and conflicting signs as you come across them.

Tapers and other channelization in the work area shall be placed in the same direction as the flow of traffic.

The same steps can be used on multi-lane roads and divided highways.

Order of Removal

Uncover any previously covered signs as you come across them.

Tapers and other channelization in the work area shall be removed in the direction opposite of the flow of traffic.

The same steps can be used on multi-lane roads and divided highways.

