



Lafrentz Road Marking



Traffic Control Plan

WORK IN PROGRESS: MAY 2026



Lafrentz Road Marking is a division of Canadian Road Builders



LAFRENTZ

A COLAS COMPANY

Drawing #	D1
Date	March 2024
Location	Urban Crosswalk

Drawing Name
 MID BLOCK CROSSWALK
 INSTALLATION - 4 LANE URBAN
 ENVIRONMENT - LEFT

General Use
 Mid-block crosswalk installation. Inside
 lane closure.

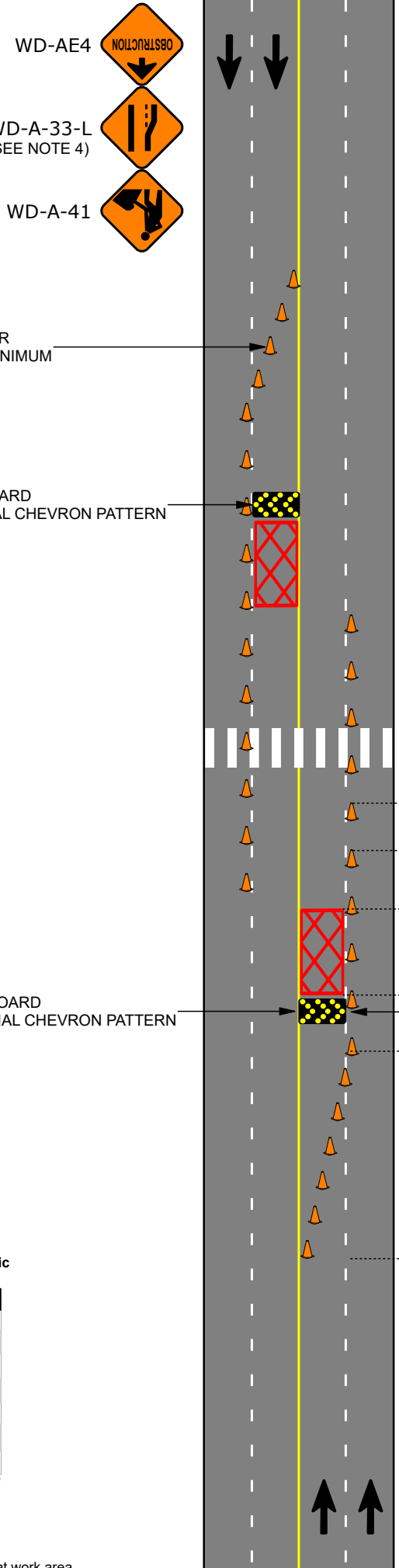
Traffic Condition
 High or Low volume locations, arterial or
 collector roads

Notes

1. Consideration must be given to traffic volume, sight distances, sign spacing, duration of work, intersections, driveways, and other factors to ensure traffic control devices are adequate in each instance.
2. Traffic cones will typically be 18" in height where the posted speed is ≤60km/h, or have a height of 28" where the posted speed is >60km/h or where required.
3. No work activities shall take place in a buffer zone.
4. A Lane Ending sign (WD-A-33-L) is required when an arrow board is not in use. A barricade may be used in place of an arrow board, typically when the posted speed is ≤60km/h.
5. Drawing is not to scale.

Legend

	Buffer Zone		Cone
--	-------------	--	------



CONE TAPER
 5 CONES MINIMUM

ARROW BOARD
 SEQUENTIAL CHEVRON PATTERN

ARROW BOARD
 SEQUENTIAL CHEVRON PATTERN

OPTIONAL BARRICADE
 (SEE NOTE 4)

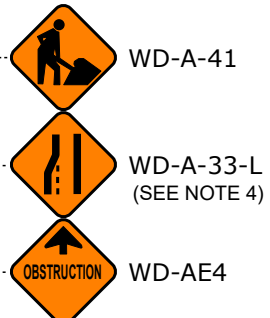
CONE TAPER
 5 CONES MINIMUM

Placement of Temporary Traffic Control Devices

V (km/h)	A	L	B	D
≤50	50	30	35	8
60	50	40	45	12
70	75	60	50	15
80	100	80	60	15
90	100	105	65	18
100	125	125	70	18
110	125	145	75	20

All distances in meters

- Where:**
- V = Posted speed limit
 - A = Space between signs
 - L = Length of cone taper
 - B = Length of buffer zone
 - D = Space between cones at work area





LAFRENTZ

A COLAS COMPANY

Drawing #	D2
Date	March 2024
Location	Urban Crosswalk

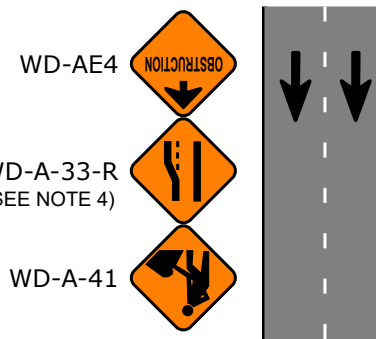
Drawing Name
 MID BLOCK CROSSWALK
 INSTALLATION - 4 LANE URBAN
 ENVIRONMENT - RIGHT

General Use
 Mid-block crosswalk installation. Outside
 lane closure.

Traffic Condition
 High or Low volume locations, arterial or
 collector roads

Notes

1. Consideration must be given to traffic volume, sight distances, sign spacing, duration of work, intersections, driveways, and other factors to ensure traffic control devices are adequate in each instance
2. Traffic cones will typically be 18" in height where the posted speed is ≤60km/h, or have a height of 28" where the posted speed is >60km/h or where required.
3. No work activities shall take place in a buffer zone.
4. A Lane Ending sign (WD-A-33-R) is required when an arrow board is not in use. A barricade may be used in place of an arrow board, typically when the posted speed is ≤60km/h.
5. Drawing is not to scale.



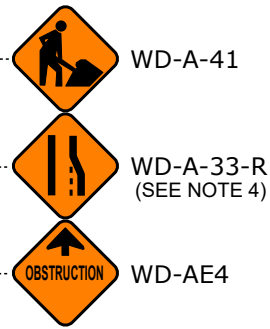
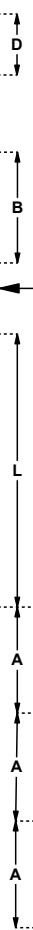
CONE TAPER
 5 CONES MINIMUM

ARROW BOARD
 SEQUENTIAL CHEVRON PATTERN

ARROW BOARD
 SEQUENTIAL CHEVRON PATTERN

OPTIONAL BARRICADE
 (SEE NOTE 4)

CONE TAPER
 5 CONES MINIMUM



Placement of Temporary Traffic Control Devices

V (km/h)	A	L	B	D
≤50	50	30	35	8
60	50	40	45	12
70	75	60	50	15
80	100	80	60	15
90	100	105	65	18
100	125	125	70	18
110	125	145	75	20

Where:
 V = Posted speed limit
 A = Space between signs
 L = Length of cone taper
 B = Length of buffer zone
 D = Space between cones at work area

Legend

	Buffer Zone		Cone
--	-------------	--	------



LAFRENTZ

A COLAS COMPANY

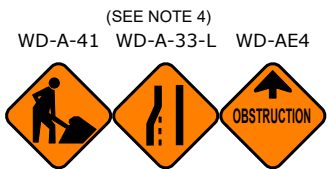
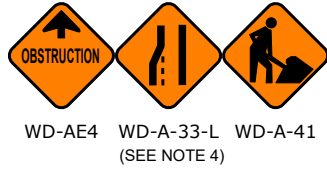
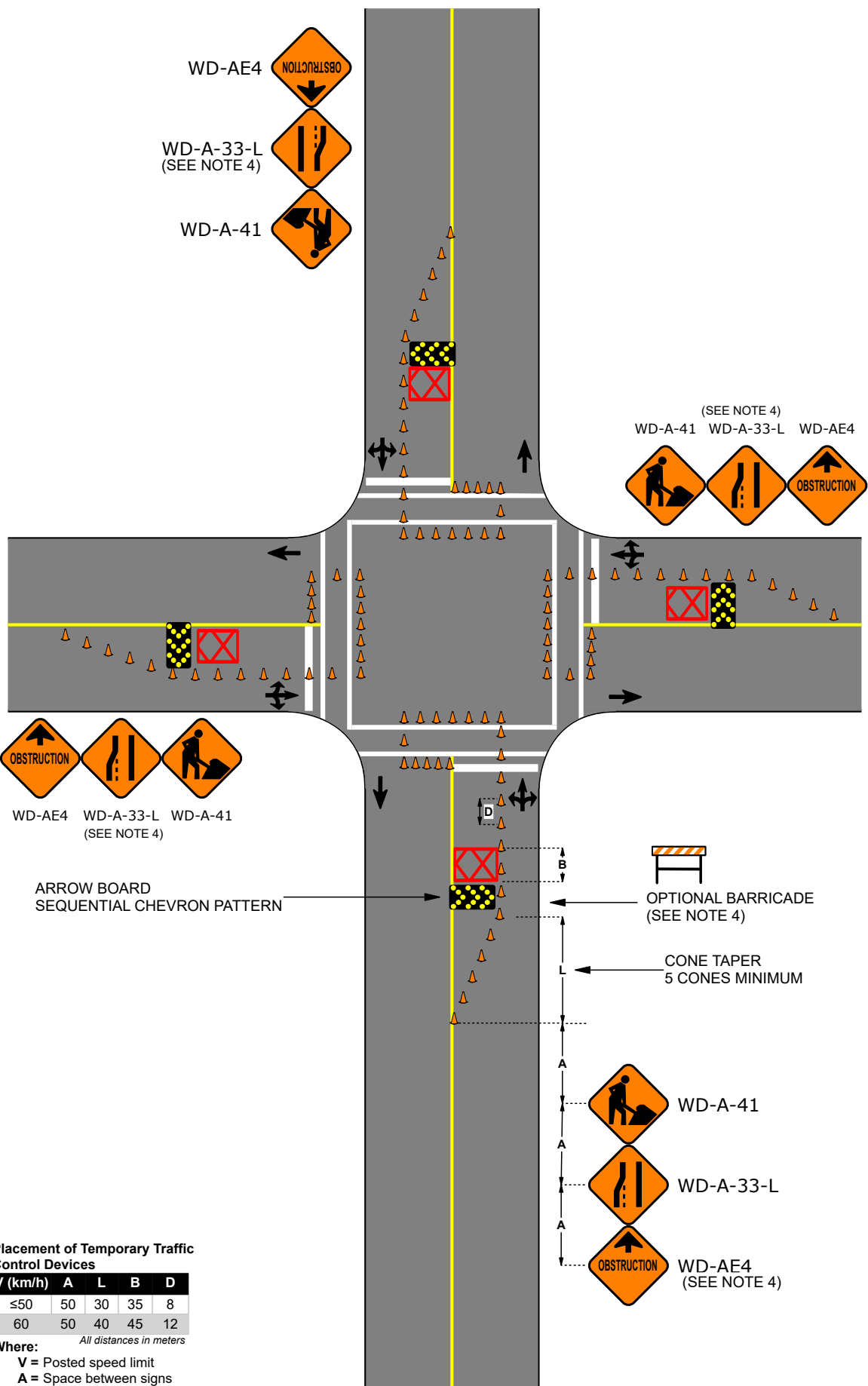
Drawing #	D3
Date	March 2024
Location	2 Lane Intersection

Drawing Name
 INTERSECTION LINE INSTALLATION -
 2 LANE URBAN ENVIRONMENT - LEFT

General Use
 Intersection crosswalk and stop bar
 installation. Inside lane closure.

Traffic Condition
 Low volume, local roads

- Notes**
1. Consideration must be given to traffic volume, sight distances, sign spacing, duration of work, intersections, driveways, and other factors to ensure traffic control devices are adequate in each instance
 2. Traffic cones will typically be 18" in height, unless otherwise required
 3. No work activities shall take place in a buffer zone.
 4. A Lane Ending sign (WD-A-33-L) is required when an arrow board is not in use. Typically when the posted speed is ≤60km/h.
 5. Drawing is not to scale.



Placement of Temporary Traffic Control Devices

V (km/h)	A	L	B	D
≤50	50	30	35	8
60	50	40	45	12

Where:
 V = Posted speed limit
 A = Space between signs
 L = Length of cone taper
 B = Length of buffer zone
 D = Space between cones at work area

Legend

	Buffer Zone		Cone
--	-------------	--	------



LAFRENTZ

A COLAS COMPANY

Drawing # D4

Date March 2024

Location 2 Lane Intersection

Drawing Name

INTERSECTION LINE INSTALLATION - 2 LANE URBAN ENVIRONMENT - RIGHT

General Use

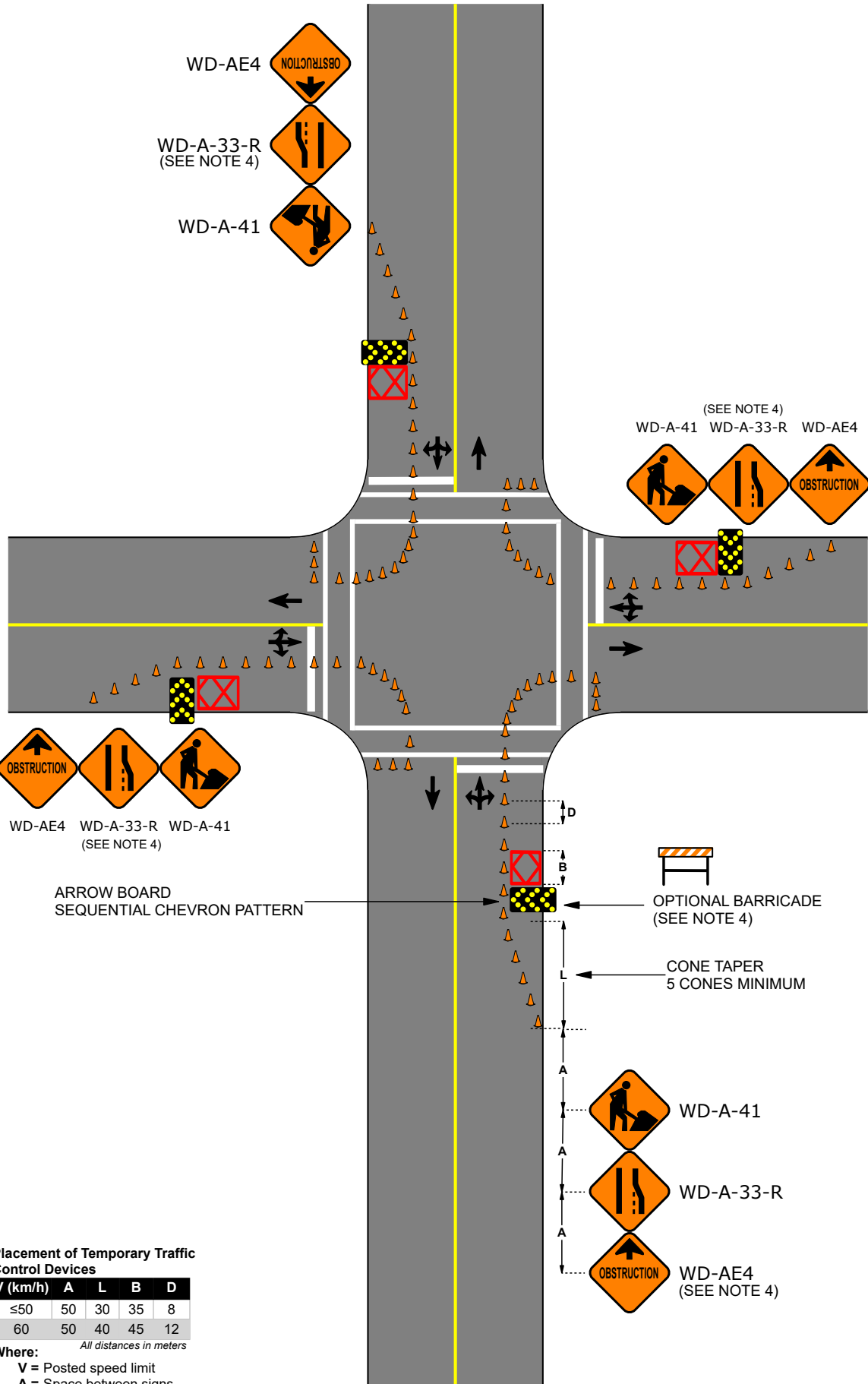
Intersection crosswalk and stop bar installation. Outside lane closure.

Traffic Condition

Low volume, local roads

Notes

1. Consideration must be given to traffic volume, sight distances, sign spacing, duration of work, intersections, driveways, and other factors to ensure traffic control devices are adequate in each instance
2. Traffic cones will typically be 18" in height, unless otherwise required
3. No work activities shall take place in a buffer zone.
4. A Lane Ending sign (WD-A-33-R) is required when an arrow board is not in use. Typically when the posted speed is ≤60km/h.
5. Drawing is not to scale.



Placement of Temporary Traffic Control Devices

V (km/h)	A	L	B	D
≤50	50	30	35	8
60	50	40	45	12

Where:
 V = Posted speed limit
 A = Space between signs
 L = Length of cone taper
 B = Length of buffer zone
 D = Space between cones at work area

Legend





LAFRENTZ

A COLAS COMPANY

Drawing #	D5
Date	March 2024
Location	Intersection

Drawing Name
 INTERSECTION LINE INSTALLATION - MULTI LANE URBAN ENVIRONMENT - LEFT

General Use
 Intersection crosswalk and stop bar installation. Inside lane closure.

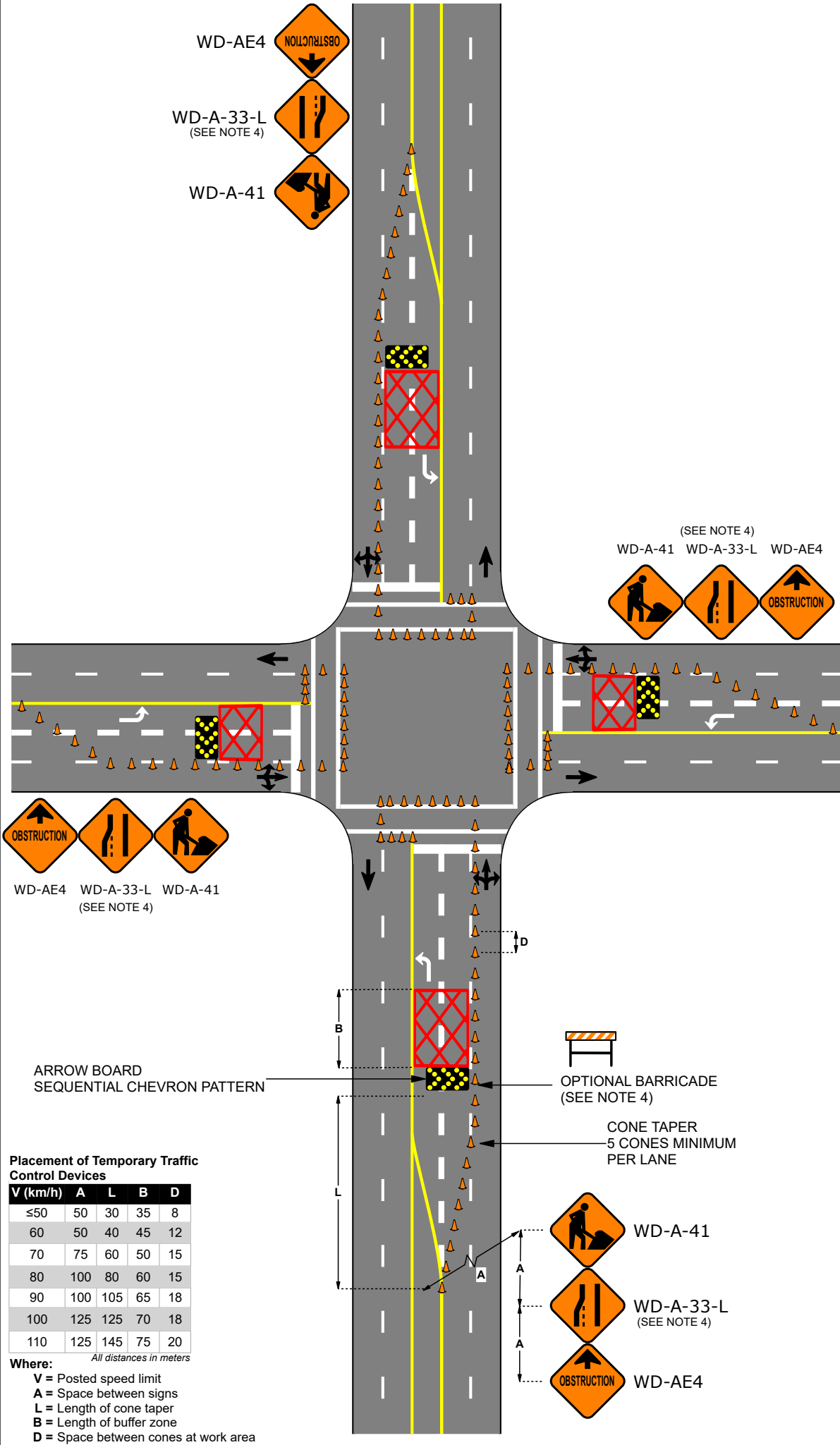
Traffic Condition
 Medium or High volume locations, arterial or collector roads

Notes

1. Consideration must be given to traffic volume, sight distances, sign spacing, duration of work, intersections, driveways, and other factors to ensure traffic control devices are adequate in each instance
2. Traffic cones will typically be 18" in height where the posted speed is ≤60km/h, or have a height of 28" where the posted speed is >60km/h or where required.
3. No work activities shall take place in a buffer zone.
4. A Lane Ending sign (WD-A-33-L) is required when an arrow board is not in use. Typically when the posted speed is ≤60km/h.
5. Drawing is not to scale.

Legend

	Buffer Zone		Cone
--	-------------	--	------



WD-AE4 WD-A-33-L WD-A-41
 (SEE NOTE 4)

ARROW BOARD
 SEQUENTIAL CHEVRON PATTERN

OPTIONAL BARRICADE
 (SEE NOTE 4)

CONE TAPER
 5 CONES MINIMUM
 PER LANE

(SEE NOTE 4)
 WD-A-41 WD-A-33-L WD-AE4

WD-A-41

WD-A-33-L
 (SEE NOTE 4)

WD-AE4



LAFRENTZ
A COLAS COMPANY

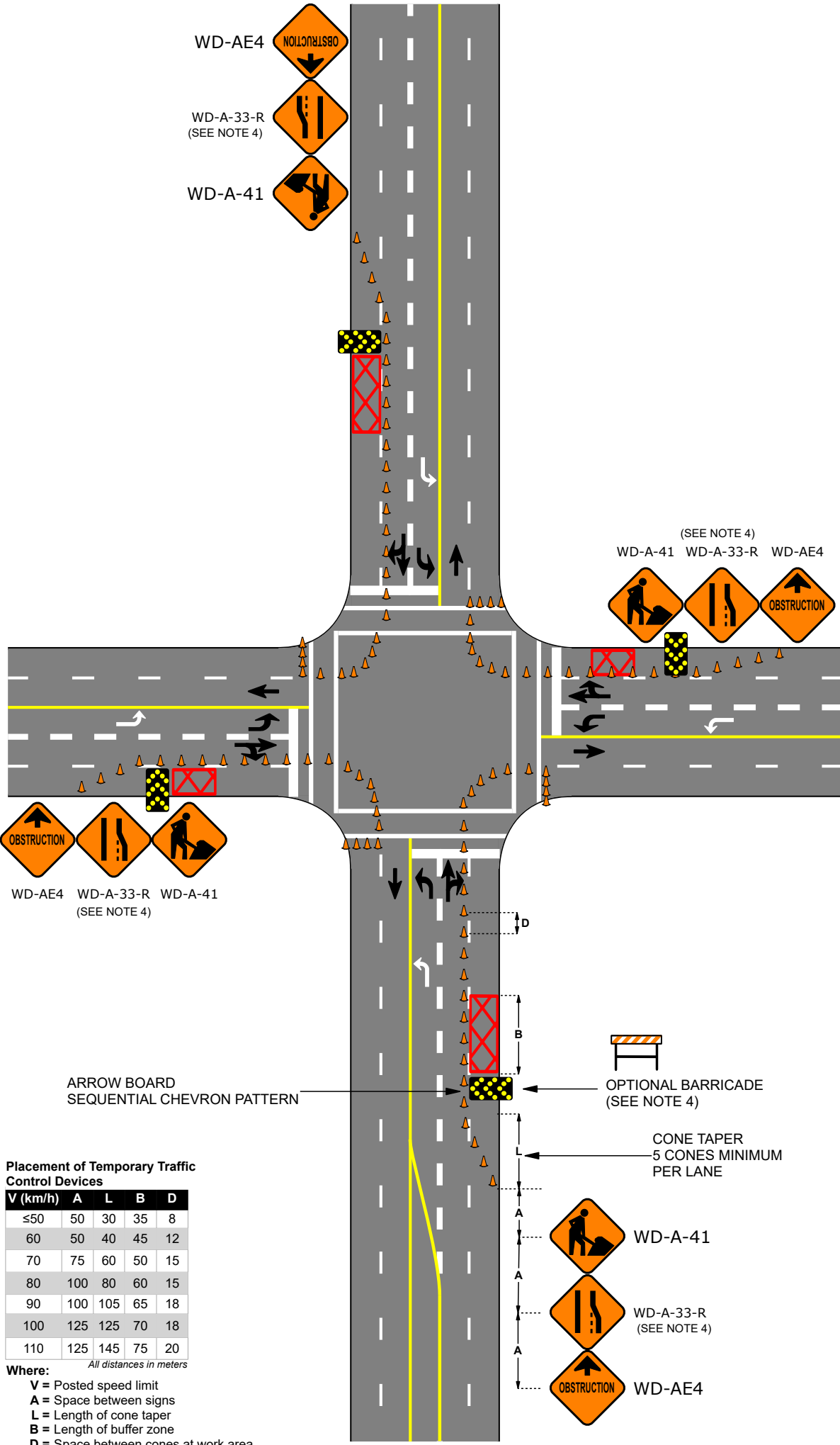
Drawing #	D6
Date	March 2024
Location	Intersection

Drawing Name
INTERSECTION LINE INSTALLATION - MULTI LANE URBAN ENVIRONMENT - RIGHT

General Use
Intersection crosswalk and stop bar installation. Outside lane closure.

Traffic Condition
Medium or High volume locations, arterial or collector roads

- Notes**
1. Consideration must be given to traffic volume, sight distances, sign spacing, duration of work, intersections, driveways, and other factors to ensure traffic control devices are adequate in each instance
 2. Traffic cones will typically be 18" in height where the posted speed is ≤60km/h, or have a height of 28" where the posted speed is >60km/h or where required.
 3. No work activities shall take place in a buffer zone.
 4. A Lane Ending sign (WD-A-33-R) is required when an arrow board is not in use. Typically when the posted speed is ≤60km/h.
 5. Drawing is not to scale.



Placement of Temporary Traffic Control Devices

V (km/h)	A	L	B	D
≤50	50	30	35	8
60	50	40	45	12
70	75	60	50	15
80	100	80	60	15
90	100	105	65	18
100	125	125	70	18
110	125	145	75	20

Where:
V = Posted speed limit
A = Space between signs
L = Length of cone taper
B = Length of buffer zone
D = Space between cones at work area

Legend

	Buffer Zone		Cone
--	-------------	--	------



LAFRENTZ

A COLAS COMPANY

Drawing # D7

Date March 2024

Location Intersection




Drawing Name
CROSSWALK INSTALLATION - MULTI LANE URBAN ENVIRONMENT

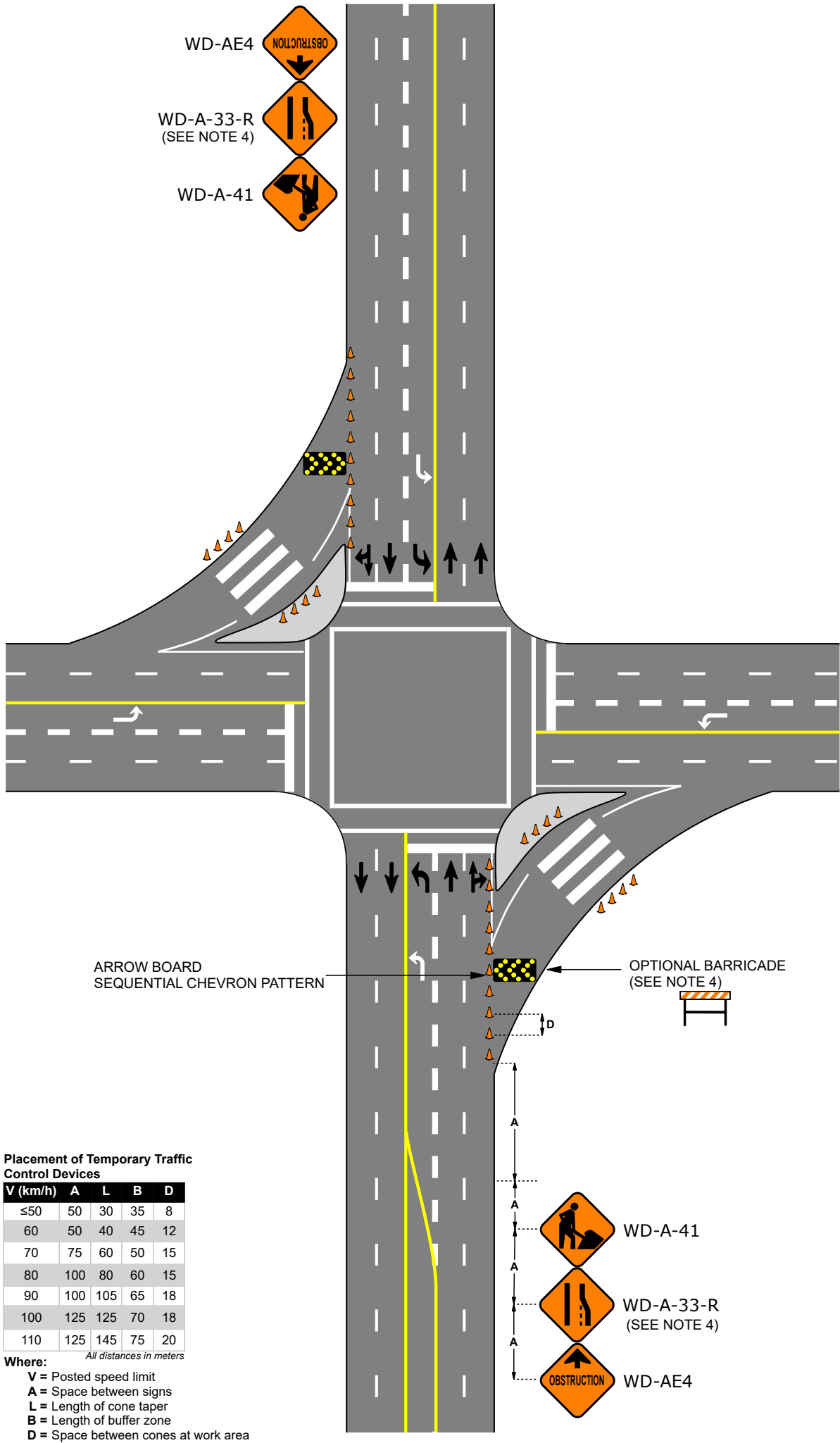
General Use
Intersection right turn bay crosswalk installation.

Traffic Condition
Medium or High volume locations, arterial or collector roads

Notes

1. Consideration must be given to traffic volume, sight distances, sign spacing, duration of work, intersections, driveways, and other factors to ensure traffic control devices are adequate in each instance
2. Traffic cones will typically be 18" in height where the posted speed is ≤60km/h, or have a height of 28" where the posted speed is >60km/h or where required.
3. No work activities shall take place in a buffer zone.
4. A Lane Ending sign (WD-A-33-R) is required when an arrow board is not in use. Typically when the posted speed is ≤60km/h.
5. Drawing is not to scale.

- WD-AE4 
- WD-A-33-R (SEE NOTE 4) 
- WD-A-41 






ARROW BOARD SEQUENTIAL CHEVRON PATTERN


OPTIONAL BARRICADE (SEE NOTE 4)

Placement of Temporary Traffic Control Devices

V (km/h)	A	L	B	D
≤50	50	30	35	8
60	50	40	45	12
70	75	60	50	15
80	100	80	60	15
90	100	105	65	18
100	125	125	70	18
110	125	145	75	20

Where:
 V = Posted speed limit
 A = Space between signs
 L = Length of cone taper
 B = Length of buffer zone
 D = Space between cones at work area

-  WD-A-41
-  WD-A-33-R (SEE NOTE 4)
-  WD-AE4

Legend
 Cone



LAFRENTZ

A COLAS COMPANY

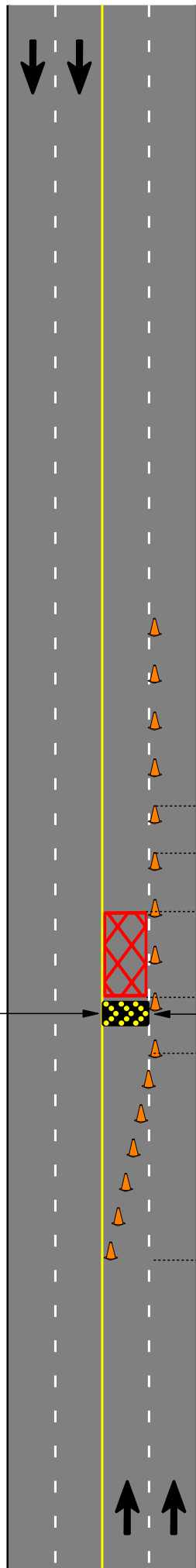
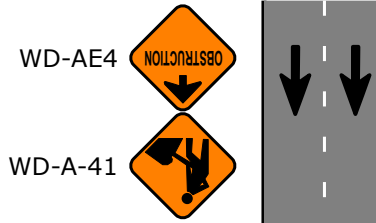
Drawing #	D8
Date	March 2024
Location	Urban 4 Lane

Drawing Name
 LANE LINE INSTALLATION - MULTI LANE URBAN ENVIRONMENT - LEFT

General Use
 Lane line or yellow centerline installation

Traffic Condition
 Low to high volume locations. Arterial, collector, or local roads.

Notes



ARROW BOARD
 SEQUENTIAL CHEVRON PATTERN

OPTIONAL BARRICADE
 (SEE NOTE 4)

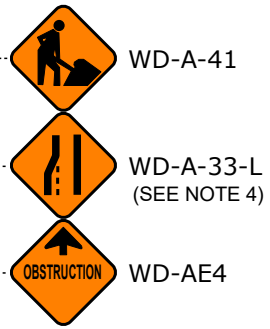
CONE TAPER
 5 CONES MINIMUM

Placement of Temporary Traffic Control Devices

V (km/h)	A	L	B	D
≤50	50	30	35	8
60	50	40	45	12
70	75	60	50	15
80	100	80	60	15
90	100	105	65	18
100	125	125	70	18
110	125	145	75	20

All distances in meters

Where:
 V = Posted speed limit
 A = Space between signs
 L = Length of cone taper
 B = Length of buffer zone
 D = Space between cones at work area



Legend
 Cone



LAFRENTZ

A COLAS COMPANY

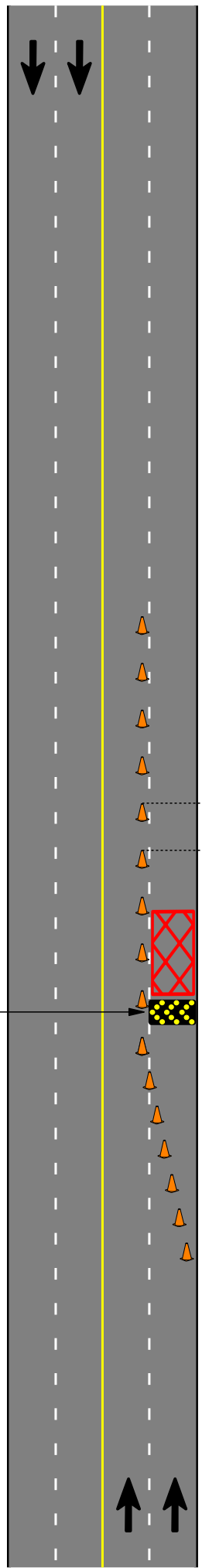
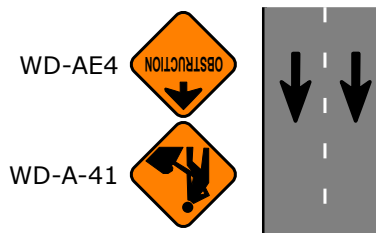
Drawing #	D9
Date	March 2024
Location	Urban 4 Lane

Drawing Name
 LANE LINE INSTALLATION - MULTI LANE URBAN ENVIRONMENT - RIGHT

General Use
 Lane line or shoulder line installation

Traffic Condition
 Low to high volume locations. Arterial, collector, or local roads.

Notes



ARROW BOARD
 SEQUENTIAL CHEVRON PATTERN

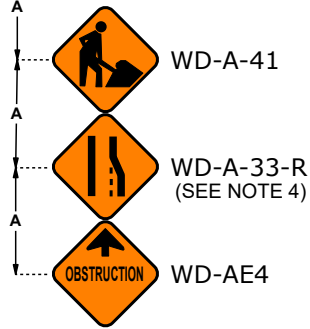
OPTIONAL BARRICADE
 (SEE NOTE 4)

CONE TAPER
 5 CONES MINIMUM

Placement of Temporary Traffic Control Devices

V (km/h)	A	L	B	D
≤50	50	30	35	8
60	50	40	45	12
70	75	60	50	15
80	100	80	60	15
90	100	105	65	18
100	125	125	70	18
110	125	145	75	20

Where:
 V = Posted speed limit
 A = Space between signs
 L = Length of cone taper
 B = Length of buffer zone
 D = Space between cones at work area



Legend
 Cone



LAFRENTZ

A COLAS COMPANY

Drawing # D10

Date March 2024

Location Local Roads

Drawing Name

NEIGHBORHOOD CROSSWALK INSTALLATION

General Use

Crosswalk installation on local roads

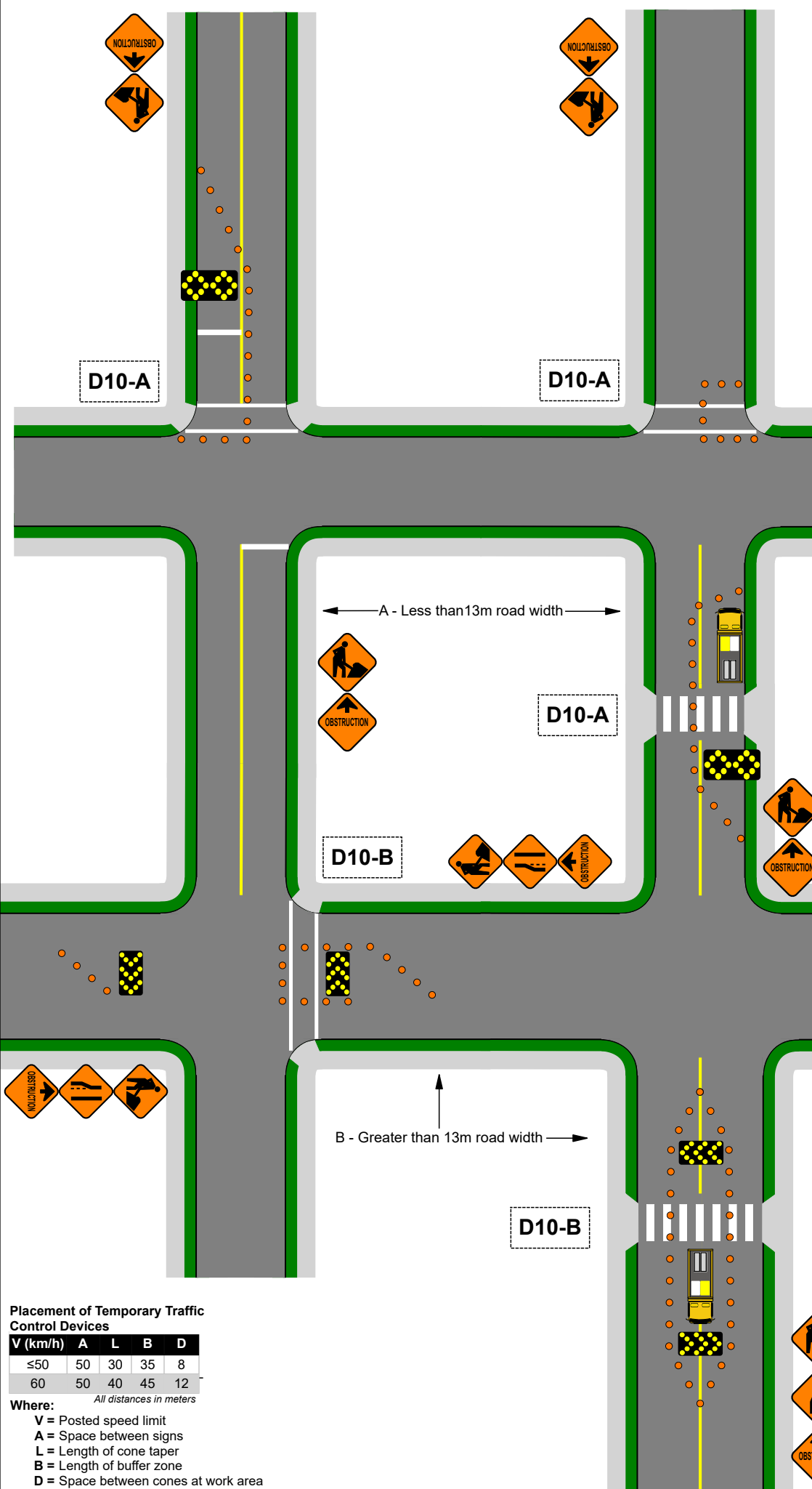
Traffic Condition

Medium to low volume locations.
Collector or local roads.

Notes

1. Consideration must be given to traffic volume, sight distances, sign spacing, duration of work, intersections, driveways, and other factors to ensure traffic control devices are adequate in each instance
2. Traffic cones will typically be 18" in height, unless otherwise required
3. No work activities shall take place in a buffer zone.
4. A Lane Ending sign (WD-A-33-L) is required when an arrow board is not in use. Typically when the posted speed is ≤60km/h.
5. Drawing is not to scale.
6. Variation 'A' represents a road width less than 13m. Traffic Control Person(s) shall be used to control traffic. Arrow board(s) shall display Caution - Diamond.
7. Variation 'B' represents a road width greater than 13m. Traffic Control Person(s) can be used to control traffic. Arrow board(s) shall display Sequential Chevron Pattern.

Legend



Placement of Temporary Traffic Control Devices

V (km/h)	A	L	B	D
≤50	50	30	35	8
60	50	40	45	12

All distances in meters

Where:

- V = Posted speed limit
- A = Space between signs
- L = Length of cone taper
- B = Length of buffer zone
- D = Space between cones at work area



LAFRENTZ

A COLAS COMPANY

Drawing # D11

Date March 2024

Location Local Roads

Drawing Name

NEIGHBORHOOD CROSSWALK INSTALLATION

General Use

Crosswalk installation on local roads

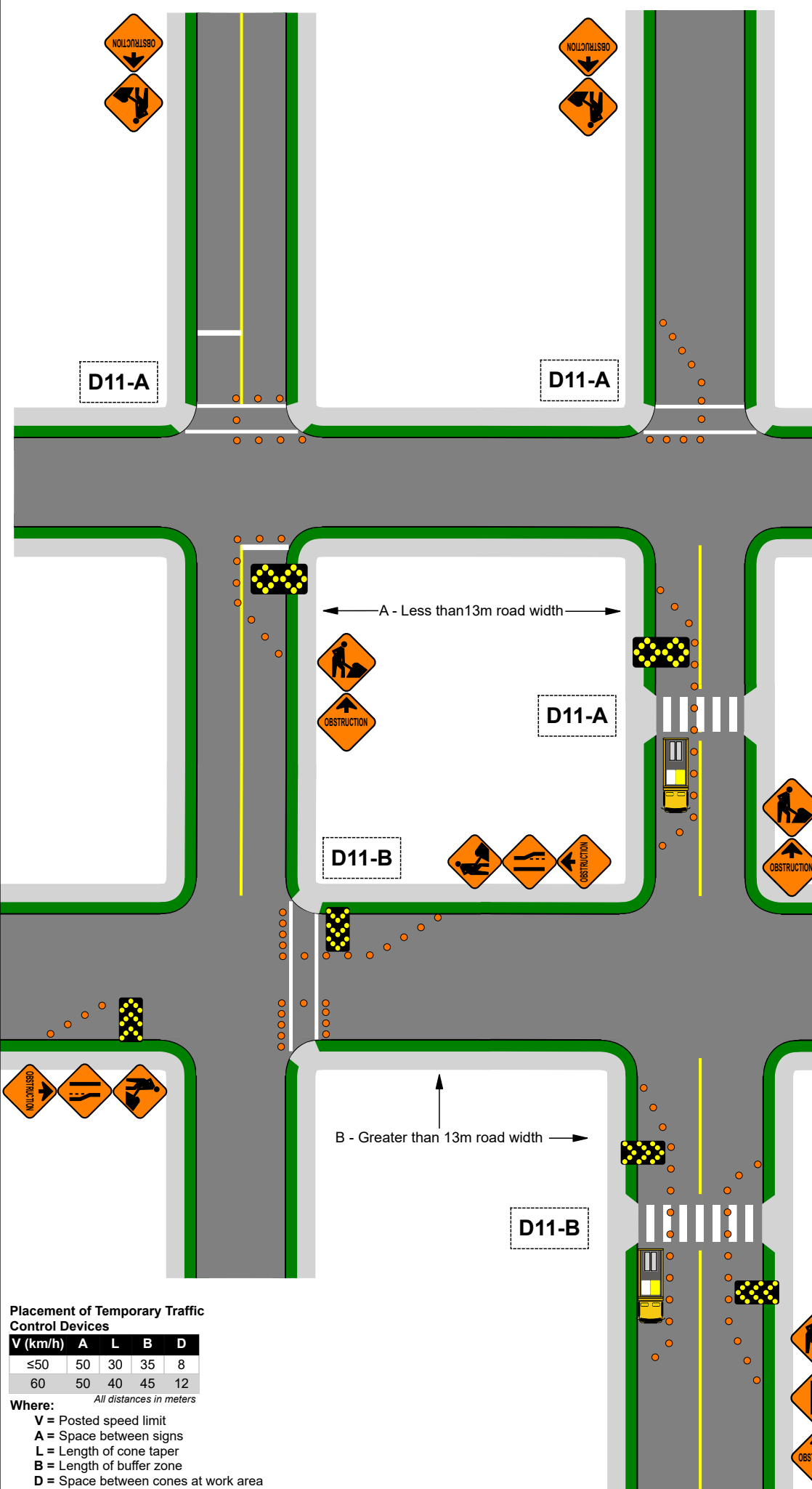
Traffic Condition

Medium to low volume locations. Collector or local roads.

Notes

1. Consideration must be given to traffic volume, sight distances, sign spacing, duration of work, intersections, driveways, and other factors to ensure traffic control devices are adequate in each instance
2. Traffic cones will typically be 18" in height, unless otherwise required
3. No work activities shall take place in a buffer zone.
4. A Lane Ending sign (WD-A-33-L) is required when an arrow board is not in use. Typically when the posted speed is ≤60km/h.
5. Drawing is not to scale.
6. Variation 'A' represents a road width less than 13m. Traffic Control Person(s) shall be used to control traffic. Arrow board(s) shall display Caution - Diamond.
7. Variation 'B' represents a road width greater than 13m. Traffic Control Person(s) can be used to control traffic. Arrow board(s) shall display Sequential Chevron Pattern.

Legend



Placement of Temporary Traffic Control Devices

V (km/h)	A	L	B	D
≤50	50	30	35	8
60	50	40	45	12

All distances in meters

- Where:**
- V = Posted speed limit
 - A = Space between signs
 - L = Length of cone taper
 - B = Length of buffer zone
 - D = Space between cones at work area



LAFRENTZ
A COLAS COMPANY

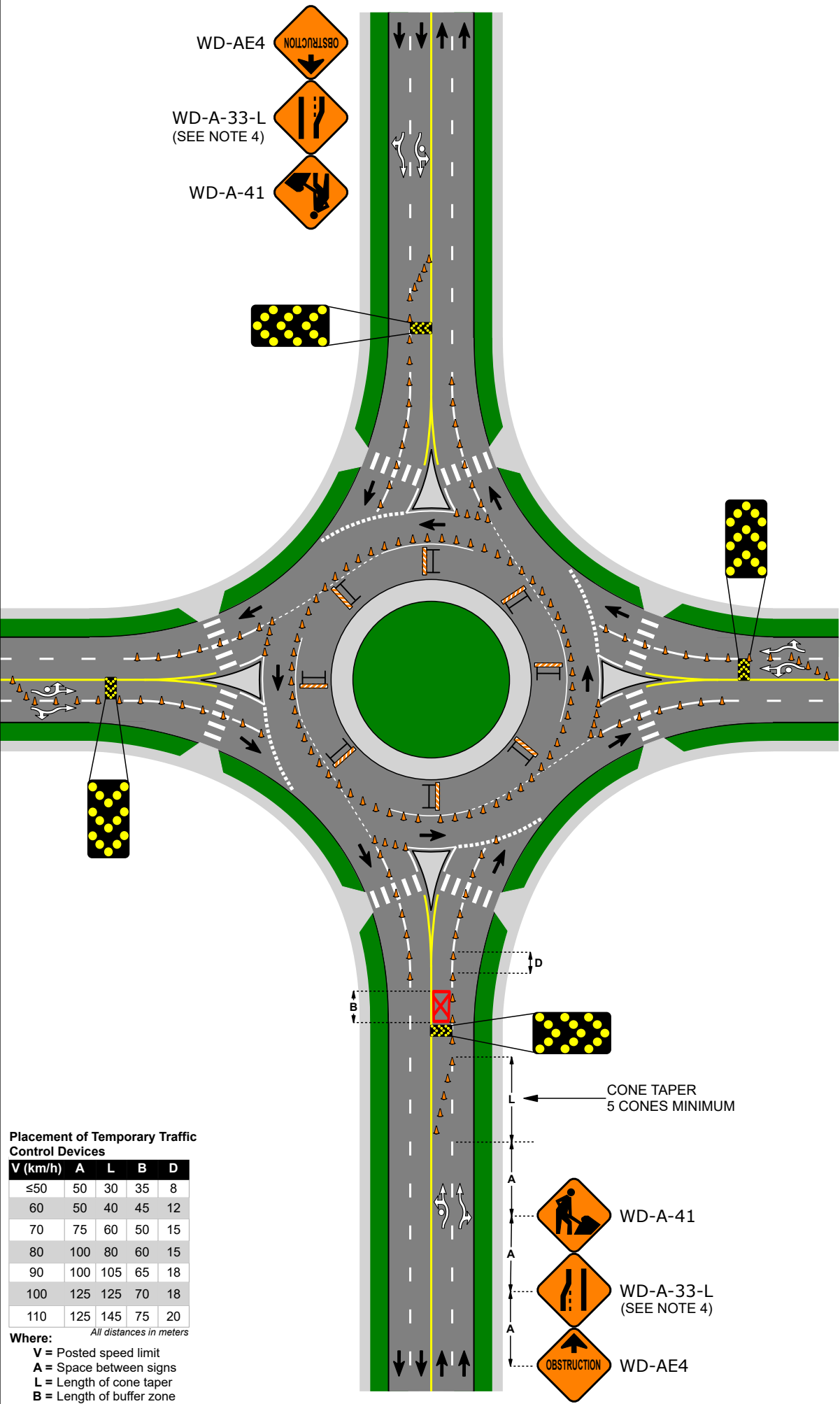
Drawing #	D12
Date	March 2024
Location	4 Lane Roundabout

Drawing Name
 ROUNDABOUT - LEFT LANE MARKING INSTALLATION - MULTI LANE URBAN ENVIRONMENT

General Use
 Roundabout or traffic circle crosswalk, yield line, lane line, gore line, or arrow installation. Inside lane closure.

Traffic Condition
 Low to High volume locations. Arterial, collector, or local roads.

- Notes**
1. Consideration must be given to traffic volume, sight distances, sign spacing, duration of work, intersections, driveways, and other factors to ensure traffic control devices are adequate in each instance
 2. Traffic cones will typically be 18" in height, unless otherwise required
 3. No work activities shall take place in a buffer zone.
 4. A Lane Ending sign (WD-A-33-L) is required when an arrow board is not in use. Typically when the posted speed is ≤60km/h.
 5. Drawing is not to scale.



Placement of Temporary Traffic Control Devices

V (km/h)	A	L	B	D
≤50	50	30	35	8
60	50	40	45	12
70	75	60	50	15
80	100	80	60	15
90	100	105	65	18
100	125	125	70	18
110	125	145	75	20

Where:
 V = Posted speed limit
 A = Space between signs
 L = Length of cone taper
 B = Length of buffer zone
 D = Space between cones at work area

Legend

	Buffer Zone
--	-------------



LAFRENTZ
A COLAS COMPANY

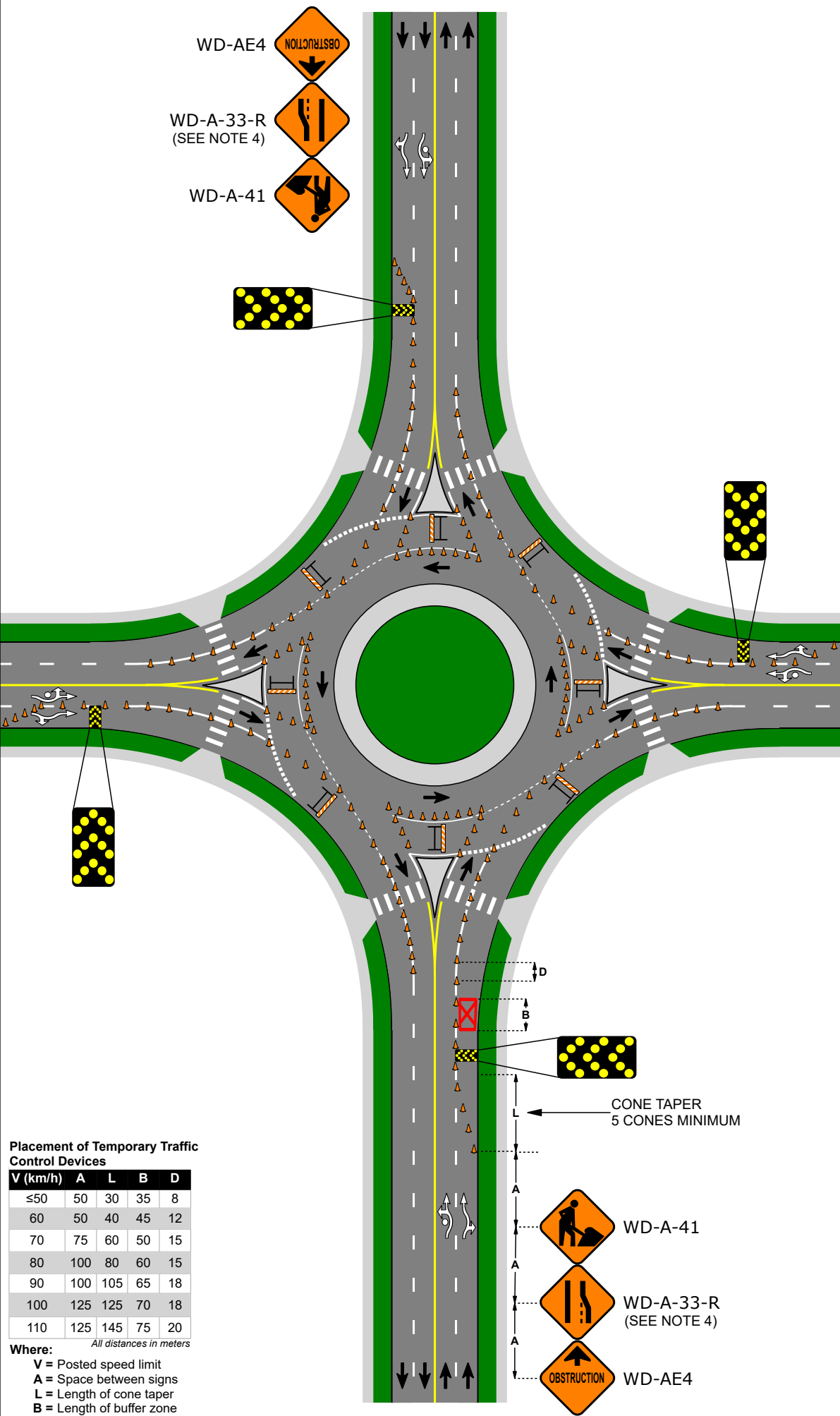
Drawing #	D13
Date	March 2024
Location	4 Lane Roundabout

Drawing Name
 ROUNDABOUT - RIGHT LANE MARKING INSTALLATION - MULTI LANE URBAN ENVIRONMENT

General Use
 Roundabout or traffic circle crosswalk, yield line, lane line, gore line, or arrow installation. Outside lane closure.

Traffic Condition
 Low to High volume locations. Arterial, collector, or local roads.

- Notes**
1. Consideration must be given to traffic volume, sight distances, sign spacing, duration of work, intersections, driveways, and other factors to ensure traffic control devices are adequate in each instance
 2. Traffic cones will typically be 18" in height, unless otherwise required
 3. No work activities shall take place in a buffer zone.
 4. A Lane Ending sign (WD-A-33-L) is required when an arrow board is not in use. Typically when the posted speed is ≤60km/h.
 5. Drawing is not to scale.



Placement of Temporary Traffic Control Devices

V (km/h)	A	L	B	D
≤50	50	30	35	8
60	50	40	45	12
70	75	60	50	15
80	100	80	60	15
90	100	105	65	18
100	125	125	70	18
110	125	145	75	20

Where:
 V = Posted speed limit
 A = Space between signs
 L = Length of cone taper
 B = Length of buffer zone
 D = Space between cones at work area

- WD-A-41
- WD-A-33-R (SEE NOTE 4)
- WD-AE4

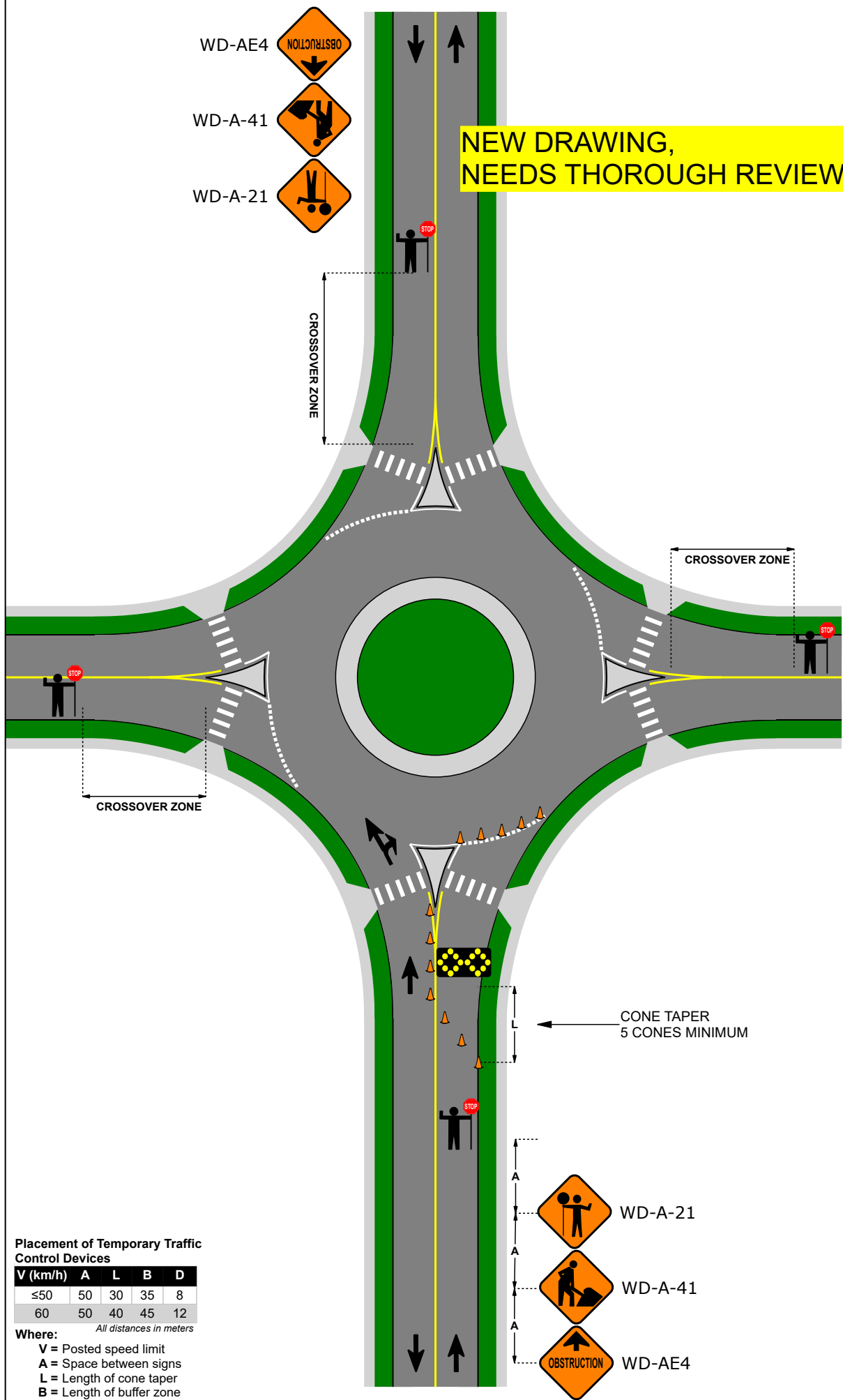
Legend

	Buffer Zone
--	-------------



**NEW DRAWING,
NEEDS THOROUGH REVIEW**

- WD-AE4
- WD-A-41
- WD-A-21



Drawing #	D14
Date	March 2024
Location	2 Lane Roundabout

Drawing Name
 ROUNDABOUT - APPROACHING LANE MARKING INSTALLATION - URBAN ENVIRONMENT

General Use
 Roundabout or traffic circle crosswalk, yield line, lane line, gore line, or arrow installation.

Traffic Condition
 Low to medium volume locations. Collector or local roads.

Notes
 A NOTE ABOUT CROSSOVER ZONE
 NOTE ABOUT SMALL AND LARGE VEHICLES CHOOSING DIRECTION AROUND CIRCLE
 1 DIRECTION AT A TIME

Placement of Temporary Traffic Control Devices

V (km/h)	A	L	B	D
≤50	50	30	35	8
60	50	40	45	12

Where:
 V = Posted speed limit
 A = Space between signs
 L = Length of cone taper
 B = Length of buffer zone
 D = Space between cones at work area

- WD-A-21
- WD-A-41
- WD-AE4

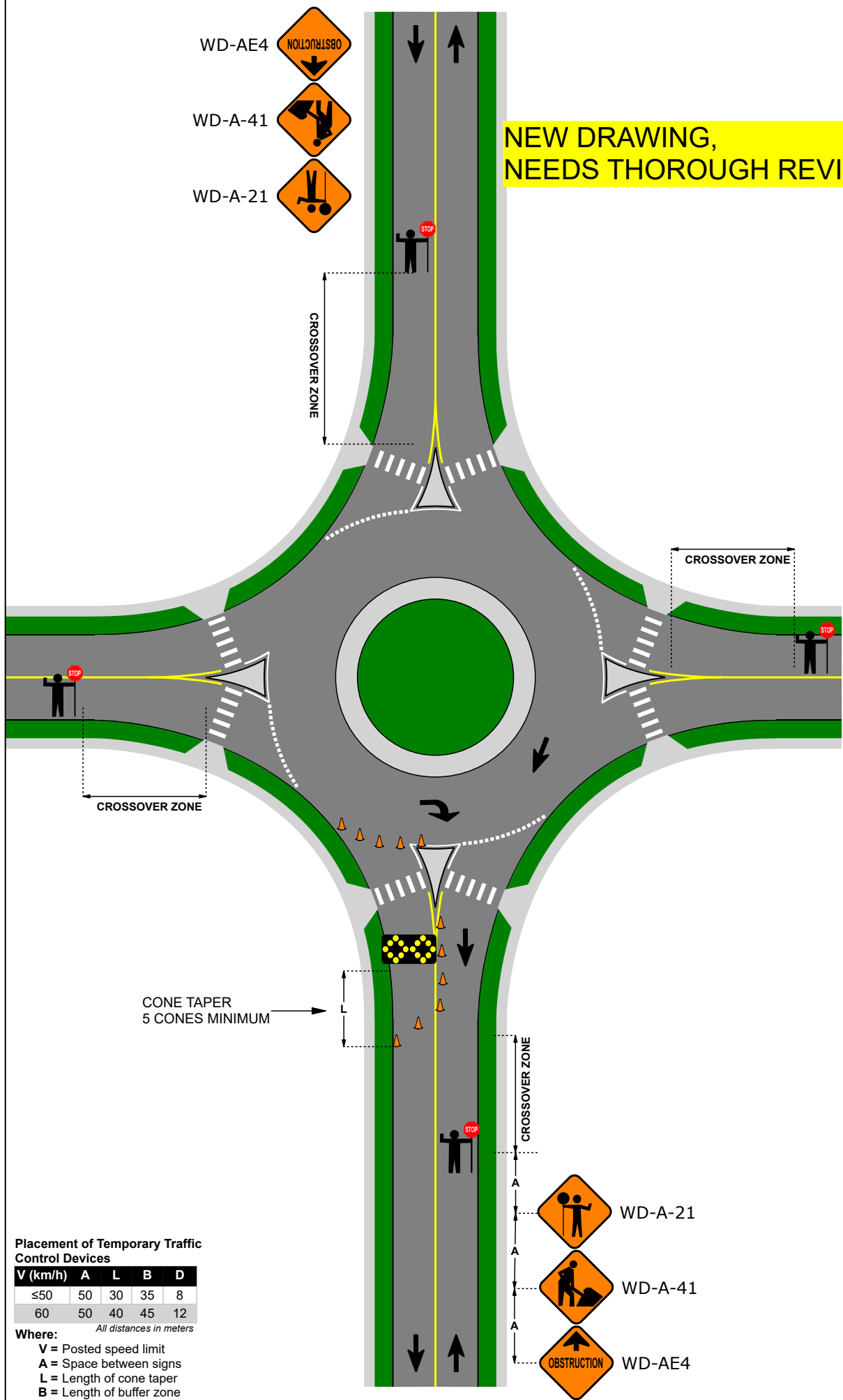
Legend

	Buffer Zone
--	-------------



**NEW DRAWING,
NEEDS THOROUGH REVIEW**

- WD-AE4
- WD-A-41
- WD-A-21



Drawing #	D15
Date	March 2024
Location	2 Lane Roundabout

Drawing Name
 ROUNDABOUT - EXITING LANE MARKING INSTALLATION - URBAN ENVIRONMENT

General Use
 Roundabout or traffic circle crosswalk, yield line, lane line, gore line, or arrow installation.

Traffic Condition
 Low to medium volume locations. Collector or local roads.

Notes
 A NOTE ABOUT CROSSOVER ZONE

Placement of Temporary Traffic Control Devices

V (km/h)	A	L	B	D
≤50	50	30	35	8
60	50	40	45	12

Where:
 V = Posted speed limit
 A = Space between signs
 L = Length of cone taper
 B = Length of buffer zone
 D = Space between cones at work area

- WD-A-21
- WD-A-41
- WD-AE4

Legend

	Buffer Zone
--	-------------



LAFRENTZ

A COLAS COMPANY

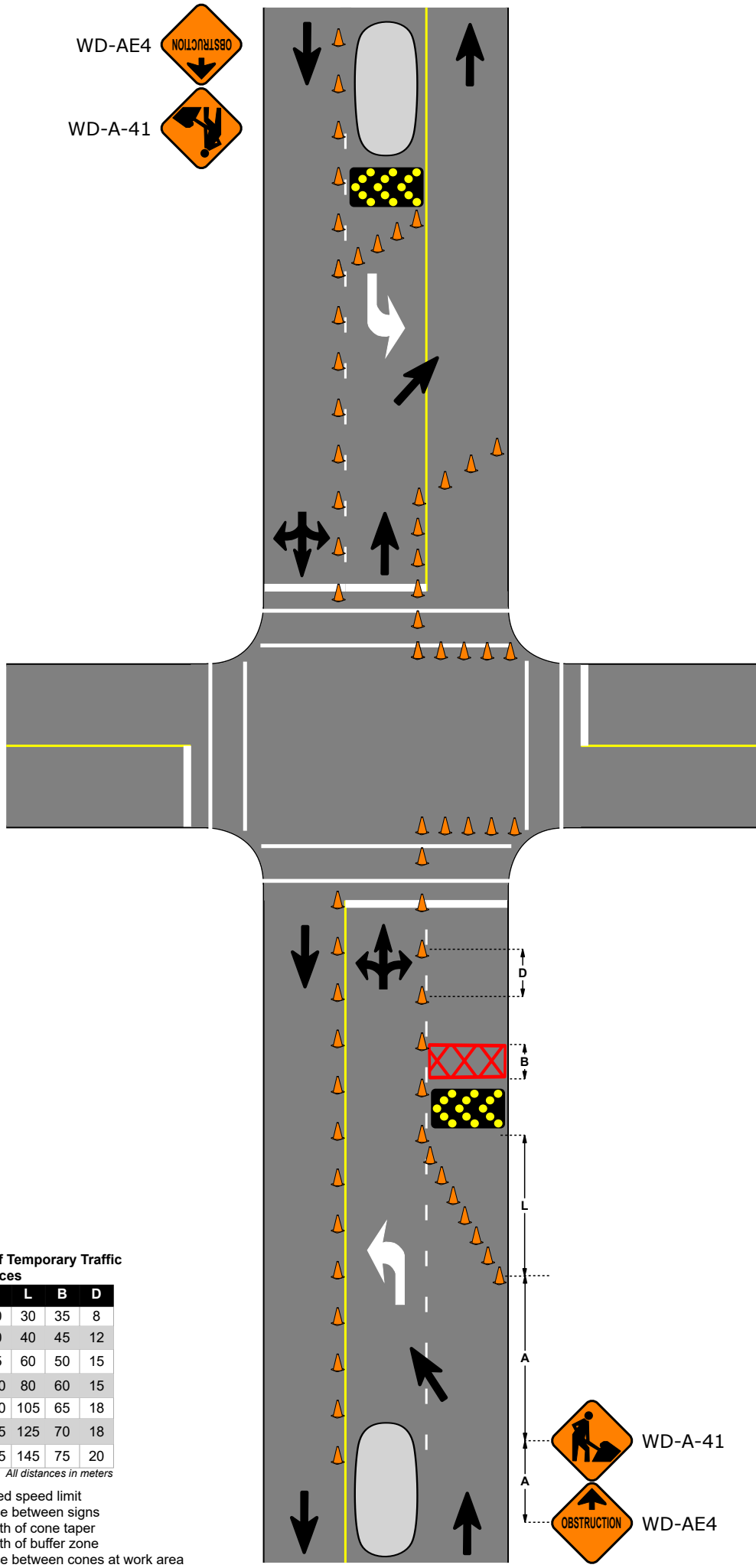
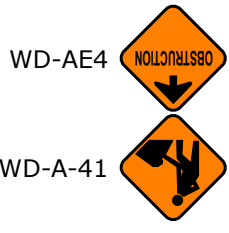
Drawing #	D16
Date	March 2024
Location	3 Lane Intersection

Drawing Name
 INTERSECTION LINE INSTALLATION -
 3 LANE URBAN ENVIRONMENT -
 OUTSIDE

General Use
 Intersection crosswalk and stop bar
 installation. Outside lane closure.

Traffic Condition
 Low to medium volume locations.
 Collector or local roads.

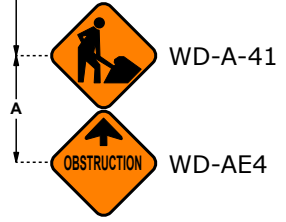
Notes



Placement of Temporary Traffic Control Devices

V (km/h)	A	L	B	D
≤50	50	30	35	8
60	50	40	45	12
70	75	60	50	15
80	100	80	60	15
90	100	105	65	18
100	125	125	70	18
110	125	145	75	20

Where:
 V = Posted speed limit
 A = Space between signs
 L = Length of cone taper
 B = Length of buffer zone
 D = Space between cones at work area



Legend

	Buffer Zone
--	-------------



LAFRENTZ
A COLAS COMPANY

Drawing #	D17
Date	March 2024
Location	3 Lane Intersection

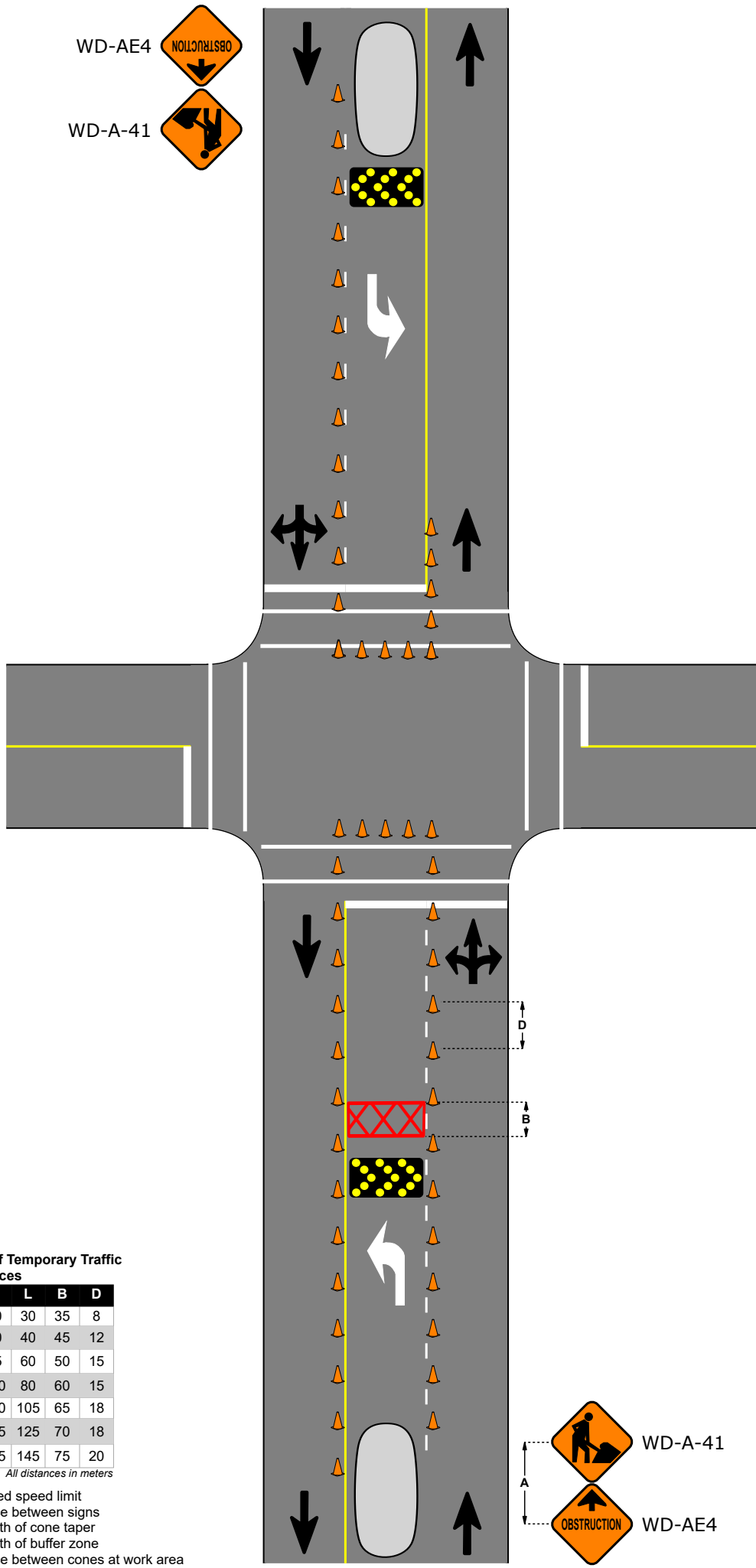
Drawing Name
INTERSECTION LINE INSTALLATION -
3 LANE URBAN ENVIRONMENT -
INSIDE

General Use
Intersection crosswalk and stop bar
installation. Inside lane closure.

Traffic Condition

Notes

Legend



Placement of Temporary Traffic Control Devices

V (km/h)	A	L	B	D
≤50	50	30	35	8
60	50	40	45	12
70	75	60	50	15
80	100	80	60	15
90	100	105	65	18
100	125	125	70	18
110	125	145	75	20

Where:
V = Posted speed limit
A = Space between signs
L = Length of cone taper
B = Length of buffer zone
D = Space between cones at work area

All distances in meters



Drawing #	D18
Date	March 2024
Location	Intersection

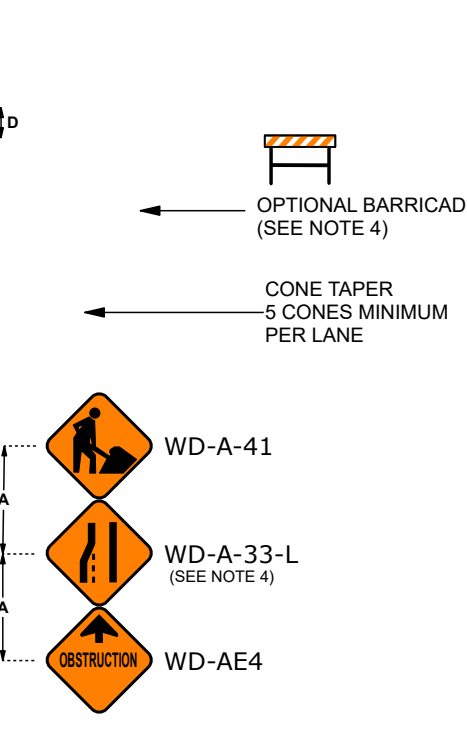
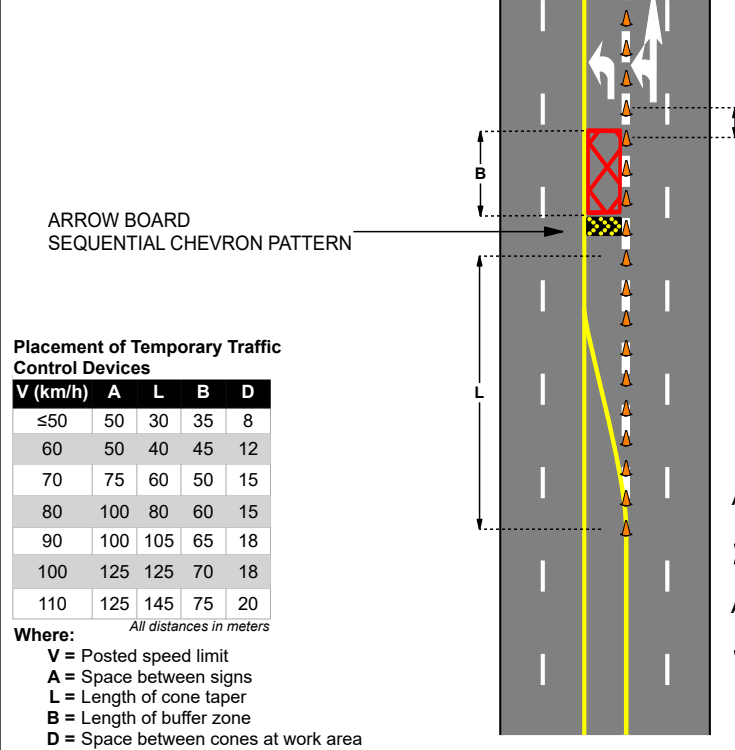
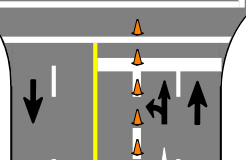
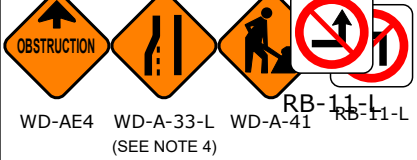
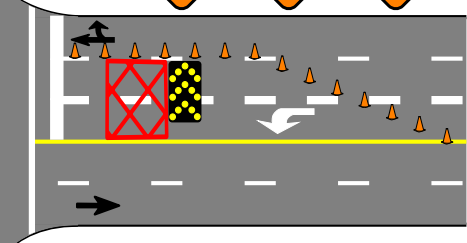
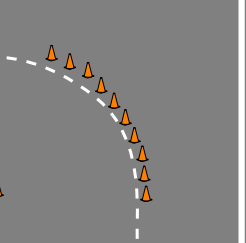
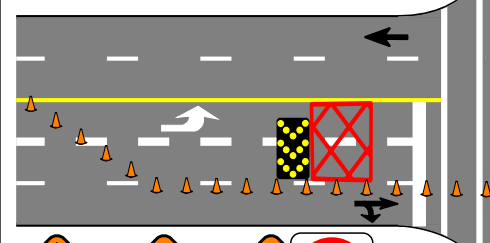
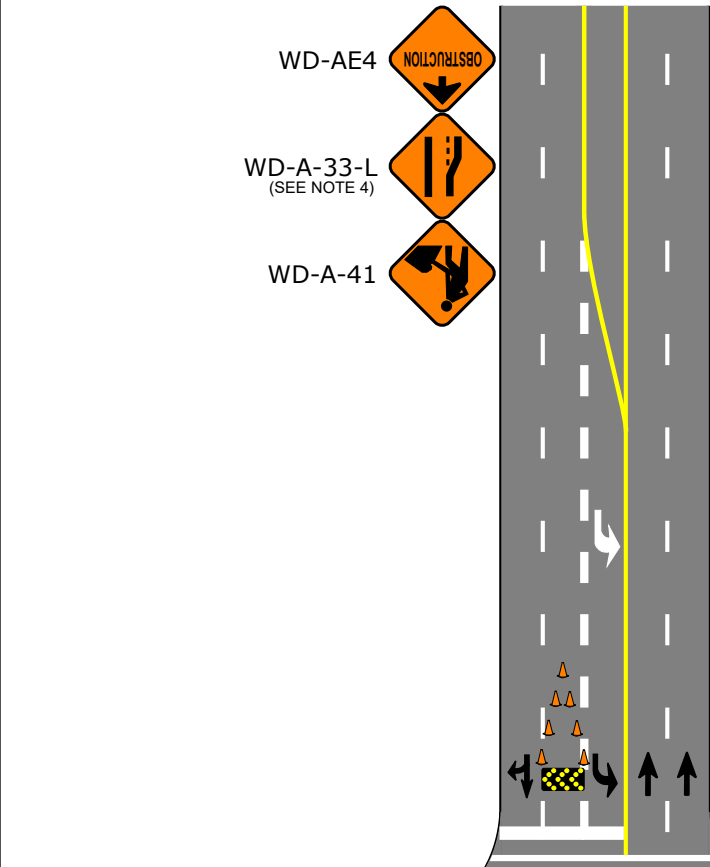
Drawing Name
 INTERSECTION LINE INSTALLATION - MULTI LANE URBAN ENVIRONMENT - LEFT

General Use
 Installing intersection guidelines

Traffic Condition
 Medium to High Volume. Any speed.

Notes

1. Consideration must be given to traffic volume, sight distances, sign spacing, duration of work, intersections, driveways, and other factors to ensure traffic control devices are adequate in each instance
2. Traffic cones will typically be 18" in height where the posted speed is ≤60km/h, or have a height of 28" where the posted speed is >60km/h or where required.
3. No work activities shall take place in a buffer zone.
4. A Lane Ending sign (WD-A-33-L) is required when an arrow board is not in use. Typically when the posted speed is ≤60km/h.
5. Drawing is not to scale.
6. No Left Turn signs (RB-11-L) may be used in the eastbound and westbound as per the drawing.



Placement of Temporary Traffic Control Devices

V (km/h)	A	L	B	D
≤50	50	30	35	8
60	50	40	45	12
70	75	60	50	15
80	100	80	60	15
90	100	105	65	18
100	125	125	70	18
110	125	145	75	20

Where:
 V = Posted speed limit
 A = Space between signs
 L = Length of cone taper
 B = Length of buffer zone
 D = Space between cones at work area

Legend

	Buffer Zone
--	-------------



LAFRENTZ

A COLAS COMPANY

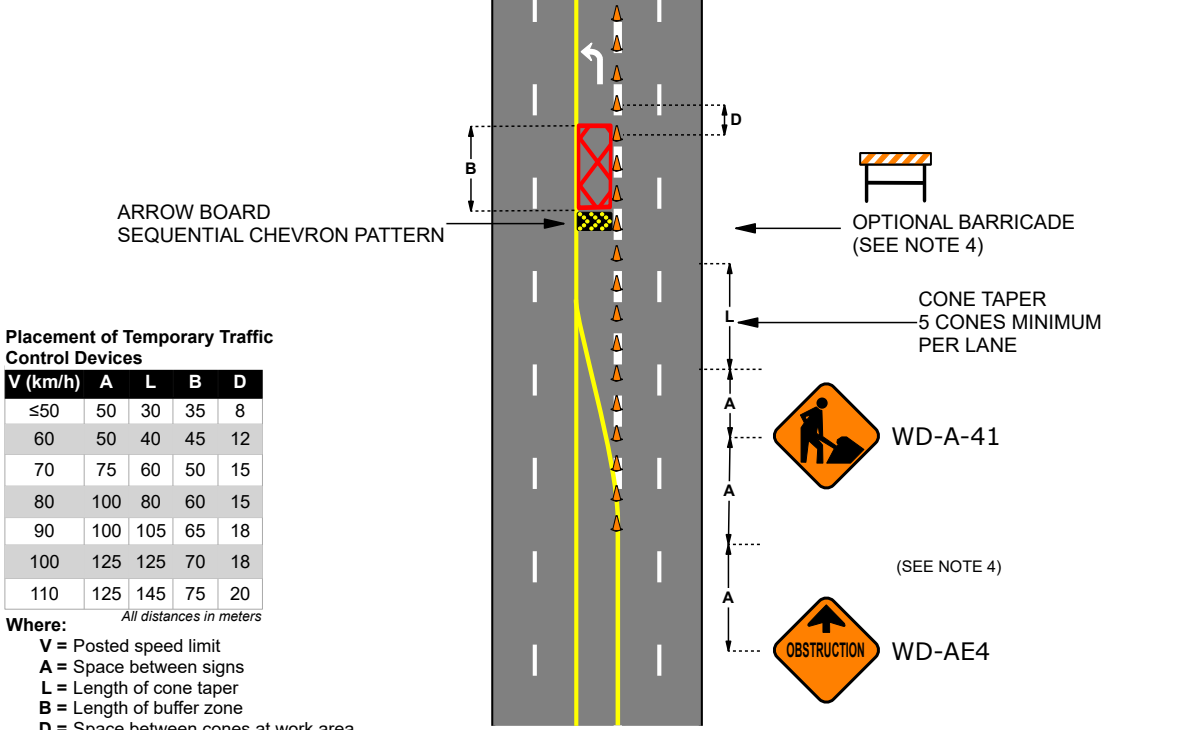
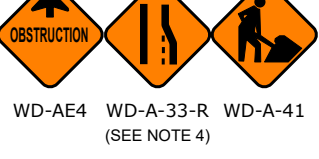
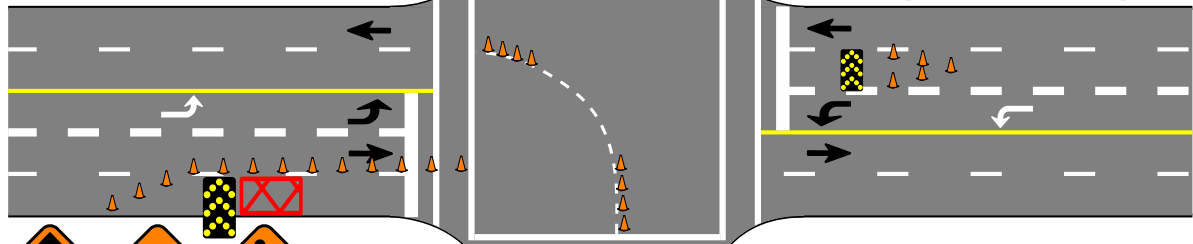
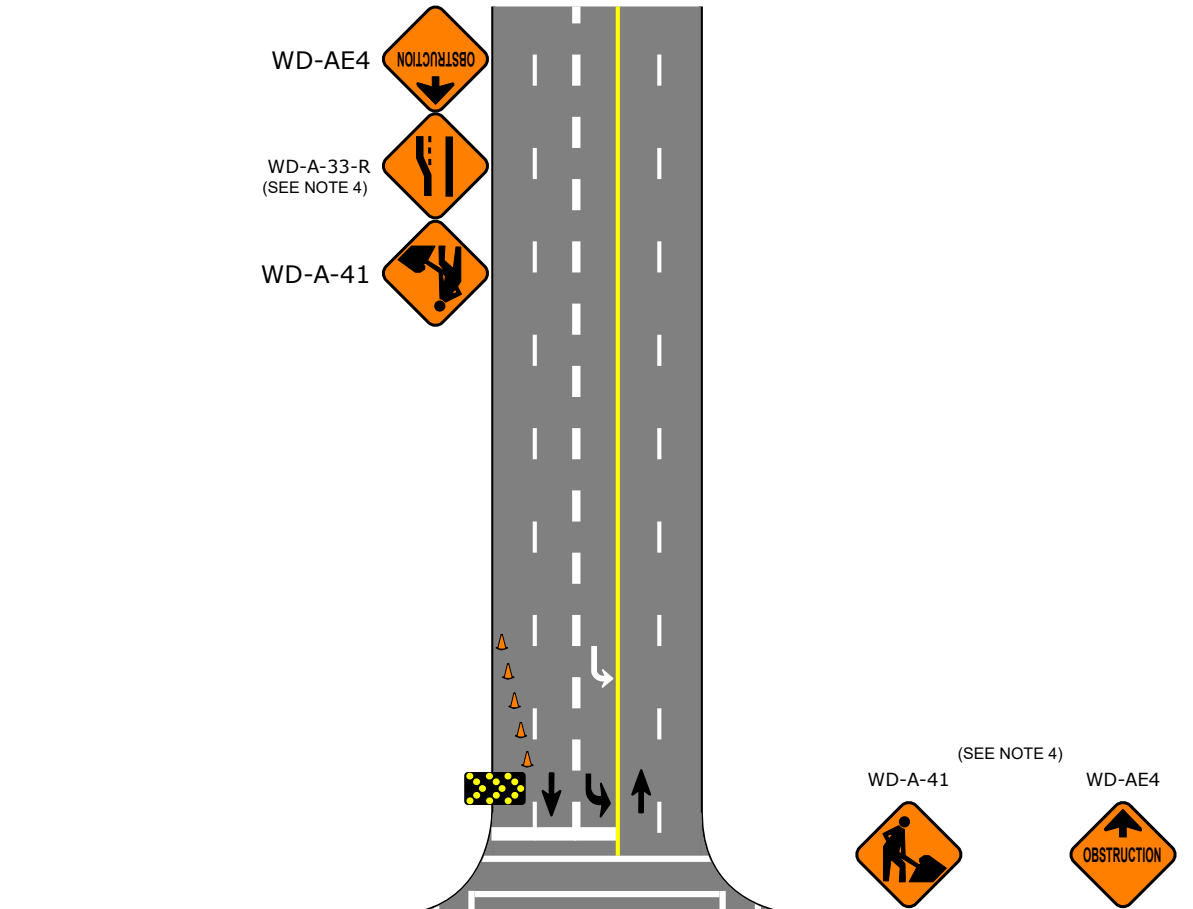
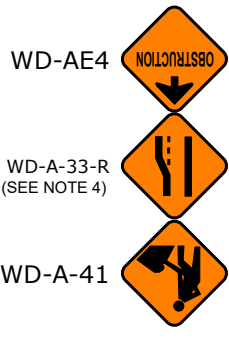
Drawing #	D19
Date	March 2024
Location	Intersection

Drawing Name
 INTERSECTION LINE INSTALLATION - MULTI LANE URBAN ENVIRONMENT - RIGHT

General Use
 Installing intersection guidelines

Traffic Condition
 Medium to High Volume. Any speed.

- Notes**
1. Consideration must be given to traffic volume, sight distances, sign spacing, duration of work, intersections, driveways, and other factors to ensure traffic control devices are adequate in each instance
 2. Traffic cones will typically be 18" in height where the posted speed is ≤60km/h, or have a height of 28" where the posted speed is >60km/h or where required.
 3. No work activities shall take place in a buffer zone.
 4. A Lane Ending sign (WD-A-33-L) is required when an arrow board is not in use. Typically when the posted speed is ≤60km/h.
 5. Drawing is not to scale.
 6. No turn restrictions required.



Placement of Temporary Traffic Control Devices

V (km/h)	A	L	B	D
≤50	50	30	35	8
60	50	40	45	12
70	75	60	50	15
80	100	80	60	15
90	100	105	65	18
100	125	125	70	18
110	125	145	75	20

Where:
 V = Posted speed limit
 A = Space between signs
 L = Length of cone taper
 B = Length of buffer zone
 D = Space between cones at work area

Legend

	Buffer Zone
--	-------------



LAFRENTZ

A COLAS COMPANY

Drawing #	D20
Date	March 2024
Location	Urban Road

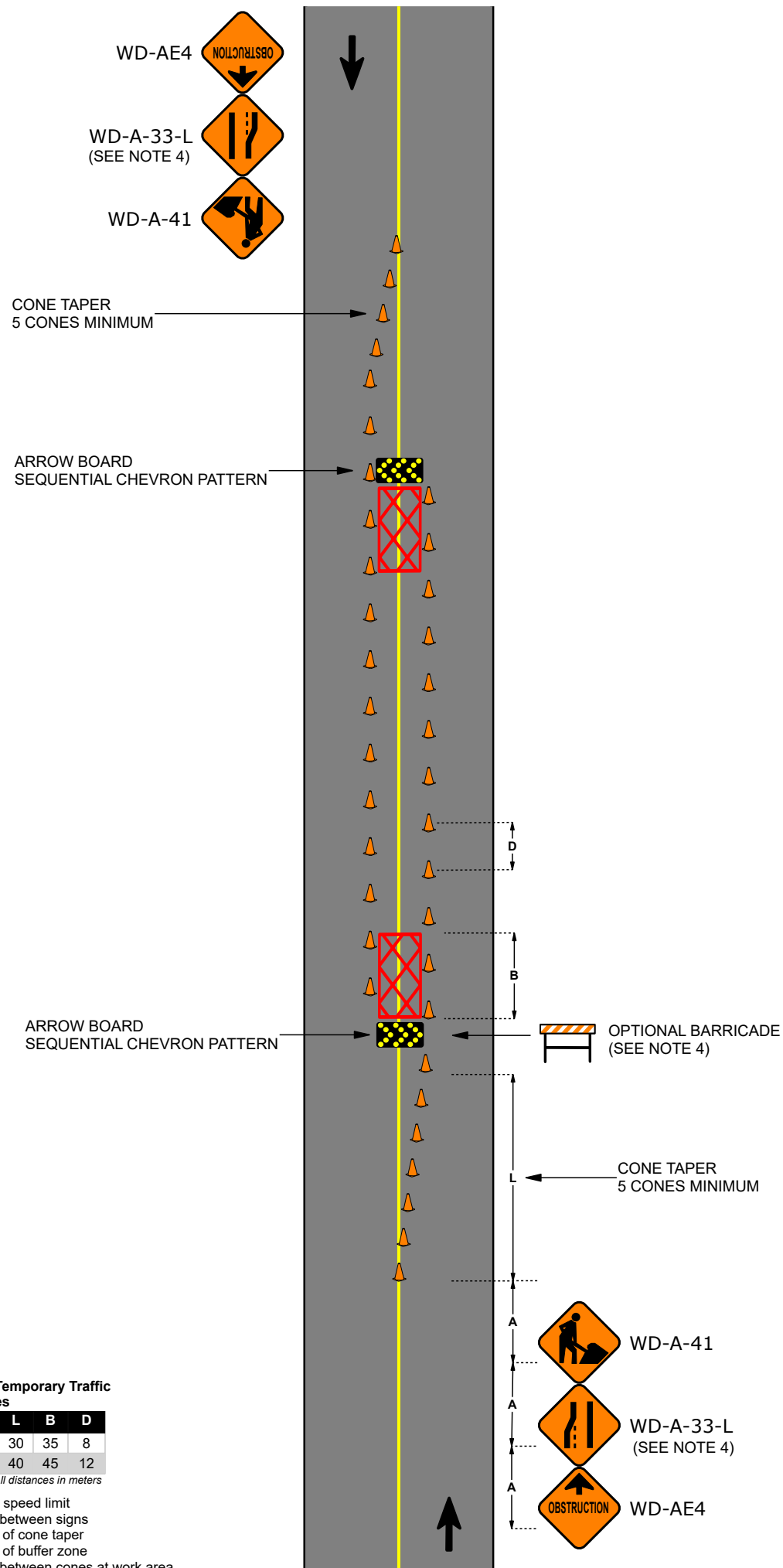
Drawing Name
CENTER LINE INSTALLATION - 2 LANE URBAN ENVIRONMENT

General Use
Installing Yellow Centerline

Traffic Condition
Low to Medium Volume. Low speed.

Notes

1. Consideration must be given to traffic volume, sight distances, sign spacing, duration of work, intersections, driveways, and other factors to ensure traffic control devices are adequate in each instance.
2. Traffic cones will typically be 18" in height where the posted speed is ≤60km/h, or have a height of 28" where the posted speed is >60km/h or where required.
3. No work activities shall take place in a buffer zone.
4. A Lane Ending sign (WD-A-33-L) is required when an arrow board is not in use. A barricade may be used in place of an arrow board, typically when the posted speed is ≤60km/h.
5. Drawing is not to scale.



Placement of Temporary Traffic Control Devices

V (km/h)	A	L	B	D
≤50	50	30	35	8
60	50	40	45	12

Where:
 All distances in meters
 V = Posted speed limit
 A = Space between signs
 L = Length of cone taper
 B = Length of buffer zone
 D = Space between cones at work area

Legend

	Buffer Zone		Cone
--	-------------	--	------



LAFRENTZ

A COLAS COMPANY

Drawing #	D26
Date	March 2024
Location	Within a turn lane

Drawing Name
 SHORT DURATION - LOADING AND UNLOADING ACTIVITIES

General Use
 To be used when loading and unloading equipment from a truck or trailer

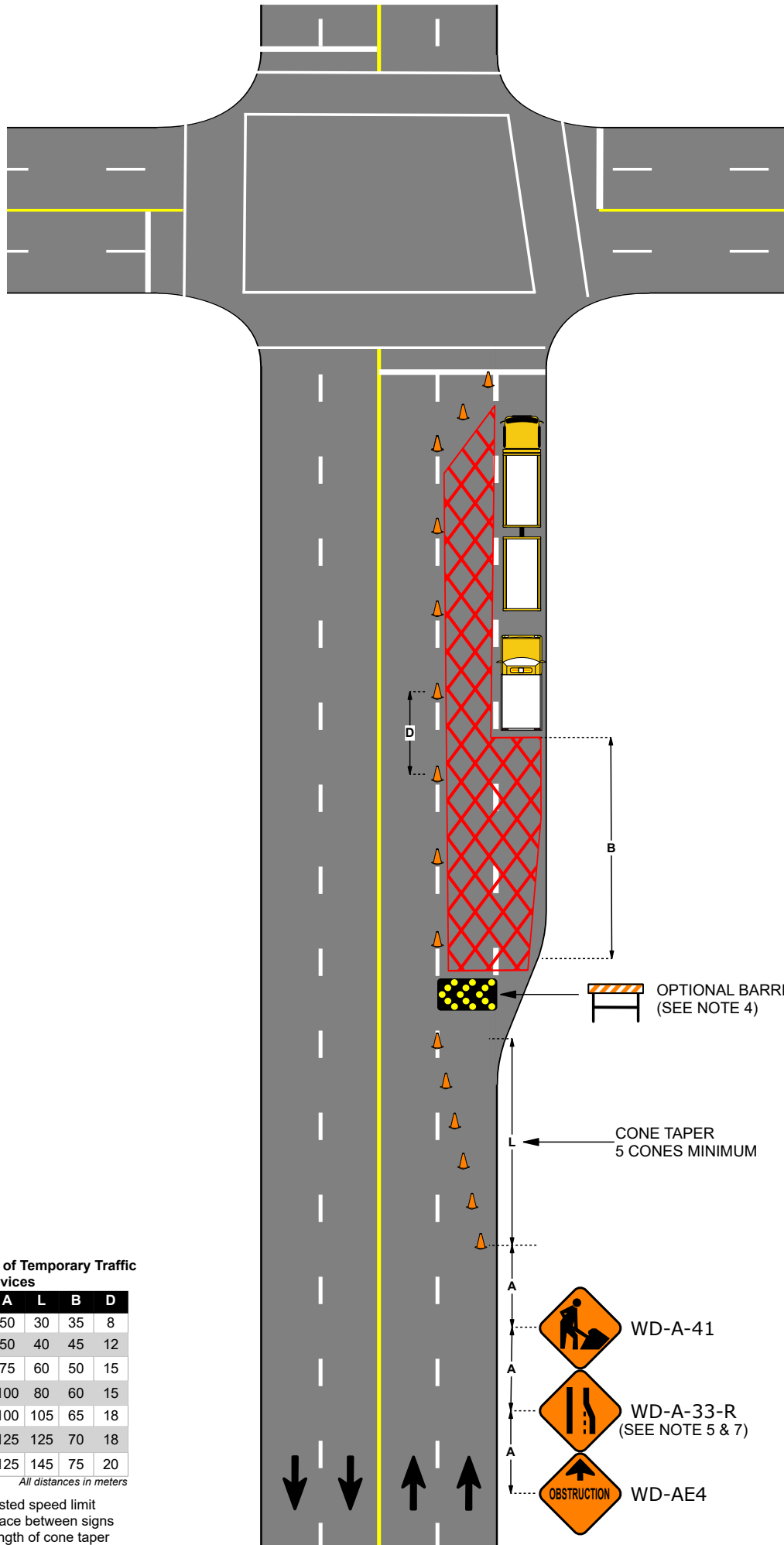
Traffic Condition
 High volume locations, Arterial roads

Notes

1. Consideration must be given to traffic volume, sight distances, sign spacing, duration of work, intersections, driveways, and other factors to ensure traffic control devices are adequate in each instance
2. Traffic cones will typically be 18" in height where the posted speed is ≤60km/h, or have a height of 28" where the posted speed is >60km/h or where required.
3. No work activities shall take place in a buffer zone.
4. A Lane Ending sign (WD-A-33-R) is required when an arrow board is not in use. A barricade may be used in place of an arrow board, typically when the posted speed is ≤60km/h.
5. One lane shall be closed next to the loading or unloading activities to create a buffer zone. The lane is to be closed with a taper prior to the unloading area.
6. This drawing can be used in a left turn lane where there is a concrete island. A WD-A-33-L should be used in this case.
7. All trailer ramps are to be placed in the upright position when not in use.
8. Drawing is not to scale.

Legend

Buffer Zone



Placement of Temporary Traffic Control Devices

V (km/h)	A	L	B	D
≤50	50	30	35	8
60	50	40	45	12
70	75	60	50	15
80	100	80	60	15
90	100	105	65	18
100	125	125	70	18
110	125	145	75	20

All distances in meters

- Where:**
- V = Posted speed limit
 - A = Space between signs
 - L = Length of cone taper
 - B = Length of buffer zone
 - D = Space between cones at work area